



## Shelley Road

Westfield, BA3 3YS

£355,000

This extended three bedroom semi detached home is situated in the heart of the popular "Janes Estate". With easy access to secondary and primary schools, play parks and cycle track links to Midsomer Norton and Radstock it makes a fantastic family home which plenty of space to grow.

- Vendor found!
- Extended home
- Great sized bedrooms
- Spacious floorplan
- Tidy rear garden
- Garage with electric door

### Viewing

Please contact our Bath Stone Property (MSN) Office on 01761 360144

if you wish to arrange a viewing appointment for this property or require further information.



3



2



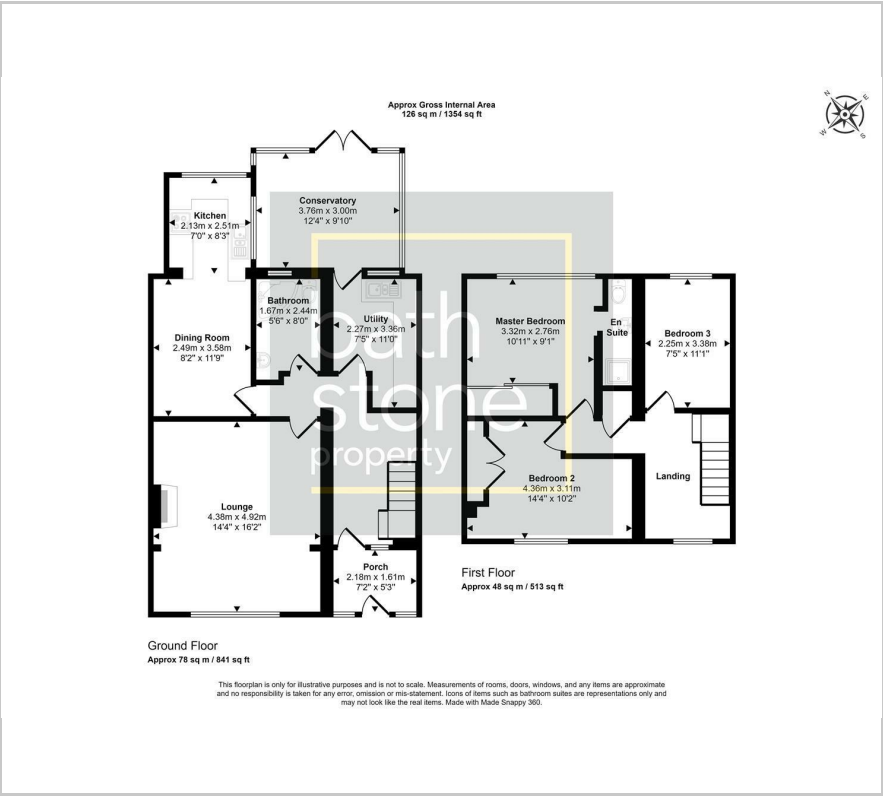
3



B



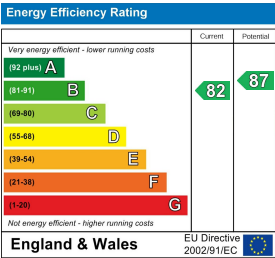
Floor Plan



Area Map



Energy Efficiency Graph



These particulars, whilst believed to be accurate are set out as a general outline only for guidance and do not constitute any part of an offer or contract. Intending purchasers should not rely on them as statements of representation of fact, but must satisfy themselves by inspection or otherwise as to their accuracy. No person in this firms employment has the authority to make or give any representation or warranty in respect of the property.