



4 Clos Maes Mawr
Energlyn | Caerphilly | CF83 2UY

FINE & COUNTRY

STEP INSIDE

4 Clos Maes Mawr

A rare opportunity to own a substantial and striking five-bedroom home on a private road in sought-after Clos Maes Mawr, Energlyn. Designed with space and versatility in mind, this impressive home features three reception rooms, three bathrooms, and the potential for multi-generational living, thanks to dual entrances and two staircases. Step inside to be greeted by a sweeping staircase, a vaulted ceiling, and a galleried landing framed by triple windows with breathtaking views over Caerphilly. With a garage, generous driveway, and excellent access to Cardiff, the A470, and M4, this home offers the perfect balance of peace, presence, and practicality. A standout property in an enviable location, homes like this rarely come to market.

Step inside

Step inside this stunning home and be immediately impressed by the grand entrance, featuring a sweeping staircase that leads to a galleried landing with vaulted ceilings and a triple aspect window, filling the space with natural light and offering beautiful views over Caerphilly. The property offers three spacious reception rooms, perfect for family gatherings and entertaining, along with three bathrooms for ultimate convenience. With its dual entrances and two staircases, this home offers exceptional versatility, ideal for multi-generational living. The property provides ample opportunity to personalise and create your perfect family home in a highly sought-after location.











STEP OUTSIDE

4 Clos Maes Mawr

Step outside

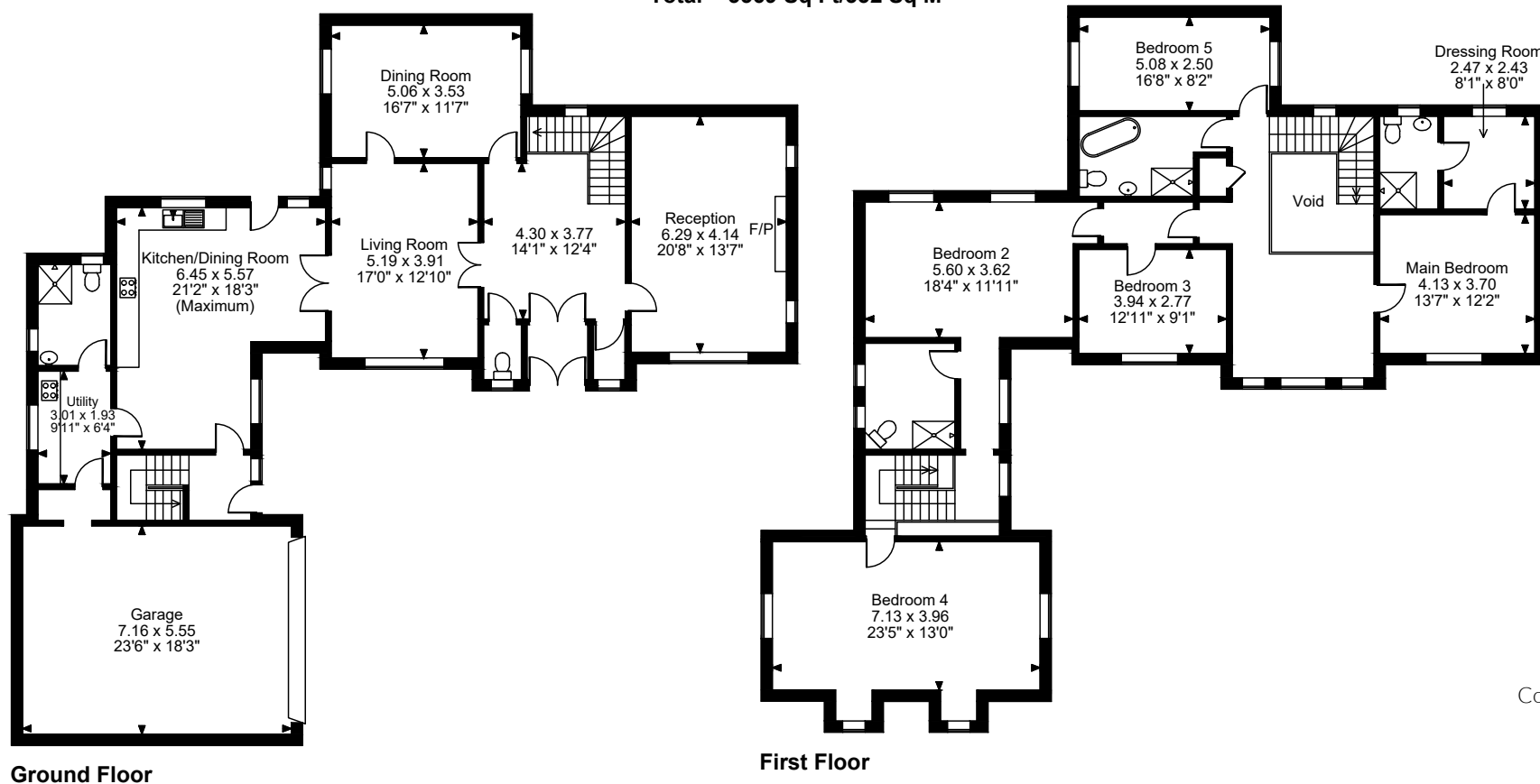
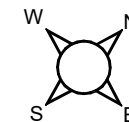
Step outside to a patio area and side gardens offering both privacy and space for outdoor entertaining, children's play, or simply enjoying the tranquil surroundings. The driveway provides ample parking for multiple vehicles, leading to a garage with access through the house for added convenience. Situated on a private road, the property enjoys a peaceful setting, yet is just minutes from the vibrant amenities of Caerphilly town centre. With easy access to major transport links, this home offers the perfect balance of quiet residential living and commuter convenience.

Area description

Energlyn, Caerphilly is a sought-after location known for its peaceful surroundings and excellent transport links. Just minutes from Caerphilly town centre, famous for its historic castle and vibrant community, residents enjoy a blend of countryside tranquility and city convenience. With easy access to Cardiff, the A470, and the M4, this area is ideal for commuters looking to benefit from the capital's amenities while enjoying a quieter, suburban lifestyle. Perfect for families, the area offers local schools, parks, and a host of amenities, making it a fantastic place to call home.



Clos Maes Mawr, Energlyn, Caerphilly
Approximate Gross Internal Area
Main House = 3141 Sq Ft/292 Sq M
Garage = 428 Sq Ft/40 Sq M
Total = 3569 Sq Ft/332 Sq M



Tenure: Freehold
Council Tax Band: G

FOR ILLUSTRATIVE PURPOSES ONLY - NOT TO SCALE

The position & size of doors, windows, appliances and other features are approximate only.
 © ehouse. Unauthorised reproduction prohibited. Drawing ref. dig/8642359/SS

FINE & COUNTRY

follow Fine & Country on



Fine & Country
Sophia House, 28 Cathedral Road, Cardiff CF11 9LJ
Tel: +44 (0)2921 690690 | cardiff@fineandcountry.com

