



Y Fan  
Gwern-Y-Domen Farm Lane | Caerphilly | CF83 3RN



# STEP INSIDE

## Y Fan

Y Fan benefits from exceptional connectivity, with the M4 and A470 nearby, providing easy access to Cardiff, Newport, and the wider South Wales region. The area boasts an array of amenities, including shops, restaurants, and well-regarded schools, alongside a rich tapestry of history and leisure. Explore the stunning Caerphilly Castle, one of Europe's largest medieval fortresses, or enjoy the panoramic views and nature trails at Pen-y-Fan Country Park. With excellent transport links and a vibrant local community, this location offers a perfect balance of convenience, culture, and countryside living.

### Step inside

Stepping into Y Fan Mansion, you're immediately enveloped by its grandeur. The high ceilings and expansive windows flood the interior with natural light, highlighting the meticulous restoration undertaken by its current owners. The magnificent drawing and dining rooms exude elegance, while the spacious kitchen offers a perfect blend of functionality and style. Ascending the breathtaking staircase, you'll discover seven en-suite bedrooms, Six of which are thoughtfully named after iconic Welsh and French figures, each with a story to tell. Among them, Ifor Bach, Owain Glyndwr, Gruffydd the Fair, and The Green Lady pay homage to Wales 'rich history and legends. The Edward Lewis Room, the premier suite, boasts stunning double aspect windows, while another bedroom, was named after Gilbert de Claire. Additionally, the estate's heritage is intertwined with that of Gilbert de Clare, the renowned builder of Caerphilly Castle. Each room captivates with its unique character, making every visit a memorable experience.

The attic spans the full length of the mansion, offering a generous space with potential for future adaptation.



















# STEP OUTSIDE

## Y Fan

Stepping outside Y Fan Mansion, your welcomed by expansive gardens spanning approximately 0.67 acres, offering a blend of natural beauty and open green space. The grounds feature both lower and upper lawns, enclosed by historic stone walls, providing a serene setting for relaxation and outdoor gatherings. Mature trees offer natural shade, enhancing the tranquil ambiance.

Adjacent to the main house is a two-story stone barn. The ground floor currently serves as a workshop, while the first floor, previously a self-contained apartment, awaits complete renovation. With existing plumbing and electrics, this space presents an excellent opportunity for conversion into a holiday let or self-contained annex, subject to planning permissions. The property also boasts ample parking for multiple vehicles, ensuring convenience for residents and guests alike. Whether you're seeking a peaceful retreat or exploring potential business ventures, the outdoor spaces of Y Fan Mansion offer a harmonious blend of relaxation and opportunity.

### A Rich History

The origins of Y Fan trace back to 1529 when it was acquired by Edward Lewis, the Sherriff of Glamorgan 3 times. The estate was developed in three distinct phases the mansion, the farmhouse, and the barn each built approximately 50 years apart. Sir Thomas Lewis, Edward's son and also a sheriff of Glamorgan, 'robbed' stone from Caerphilly Castle for the farmhouse, a feature still evident in its dressed stonework today. By 1630, the Lewis family relocated to St Fagans, a grander architectural counterpart to Y Fan. The Lewis male lineage eventually ended, and in the 1730s, Elizabeth Lewis married the Earl of Plymouth, transferring the family's South Wales estate including Y Fan and St Fagans to the Plymouth family. While St Fagans remained a summer residence, Y Fan was left unoccupied for over 260 years, with only the farmhouse used by tenant farmers working the surrounding land. Now beautifully restored by the current owners, Y Fan stands as a distinguished Grade II listed residence, blending historic charm with modern comforts.

### Additional Information

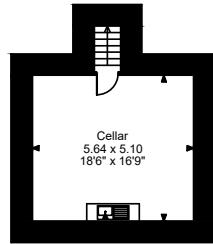
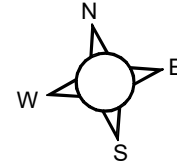
Currently operating as a boutique Bed & Breakfast, Y Fan offers an exceptional lifestyle business opportunity with room for further growth. The property benefits from an entirely new heating, electrical, and sprinkler system, ensuring comfort and efficiency. Conveniently located near Caerphilly Train Station, it also offers easy access to ancient meadowland one of the last 3% of its kind in the UK ideal for horse riding and scenic countryside walks.

Whether as a distinguished family home or a thriving business, Y Fan presents a rare opportunity to own a remarkable piece of Welsh history in the heart of Caerphilly.

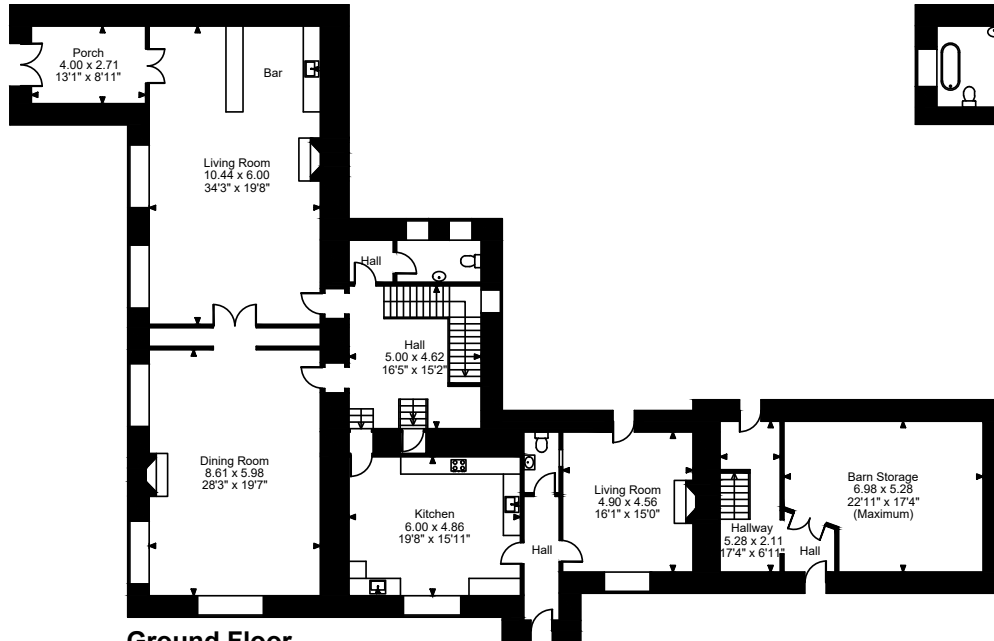
### Directions:

<https://w3w.co/fakes.likes.focus>

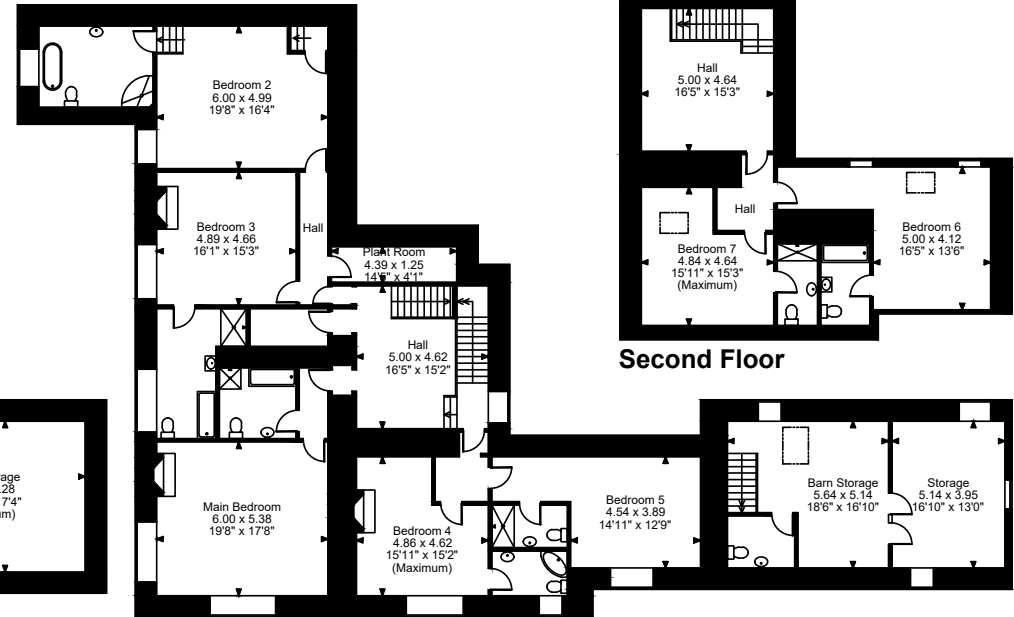
**Y Fan Gwern-Y-Domen Farm Lane, Caerphilly**  
**Approximate Gross Internal Area**  
**Main House = 6290 Sq Ft/584 Sq M**  
**Barn Storage = 1045 Sq Ft/97 Sq M**  
**Total = 7335 Sq Ft/681 Sq M**



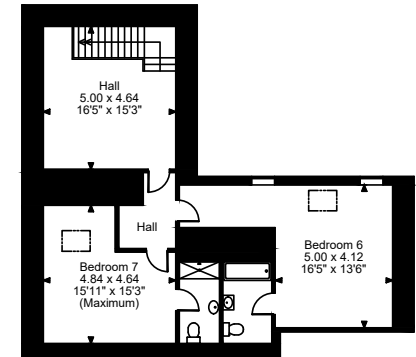
**Cellar**



**Ground Floor**



**First Floor**



**Second Floor**

**FOR ILLUSTRATIVE PURPOSES ONLY - NOT TO SCALE**

The position & size of doors, windows, appliances and other features are approximate only.  
 © ehouse. Unauthorised reproduction prohibited. Drawing ref. dig/8634905/MPE

Fine & Country Newport  
Merlin House, Langstone, Newport, NP18 2HJ  
01633 927 277 | [newport@fineandcountry.com](mailto:newport@fineandcountry.com)

