





West Heath Road | London | NW3

£1,038 Per week |

 4  2  2  C

ADN
RESIDENTIAL

A well presented detached family house arranged over two floors discreetly positioned behind a mature line of trees providing privacy from the street. This fantastic home offers 1588 sq ft of well planned accommodation and comprises, four double bedrooms, two bathrooms, modern eat-in kitchen/ family room, reception room and a large private decked terrace. West Heath Road runs around the West perimeter of the vast open space of Hampstead Heath. This is a leafy residential road with access to Hampstead, Golders Green and Finchley Road. The house is approximately 240m from Golders Hill Park.

-
- Four Bedrooms
 - Two Bathrooms
 - 2 Reception Rooms
 - Decked Terrace & Balcony
 - Discreetly Positioned
 - Permit Parking
-

Council Tax Band: G
EPC: C







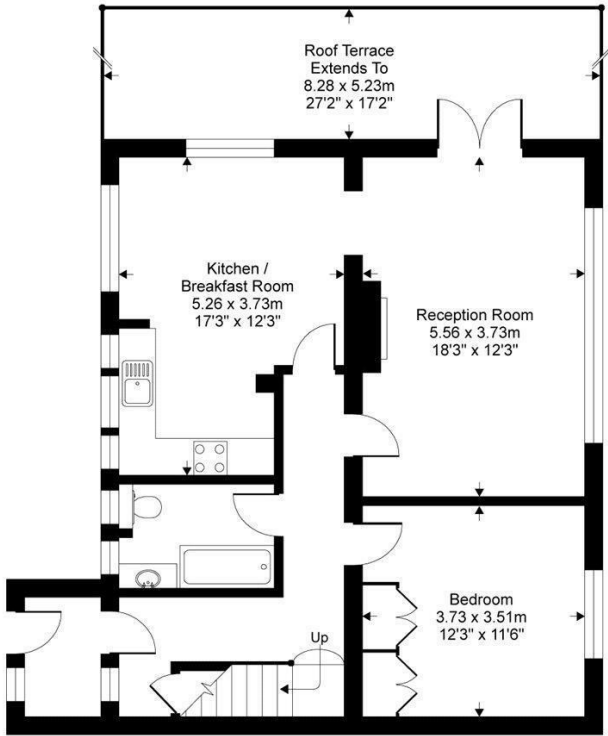
West Heath Road, London, NW3

Gross internal floor area (approx):

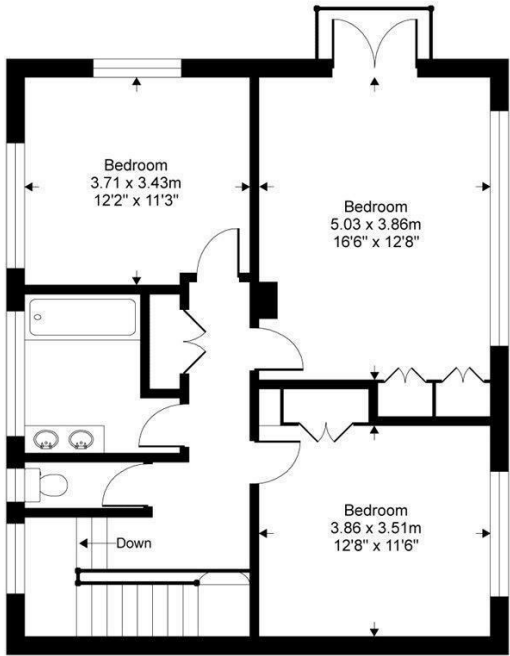
147.5 sq m / 1588 sq ft

For Identification only - Not to scale

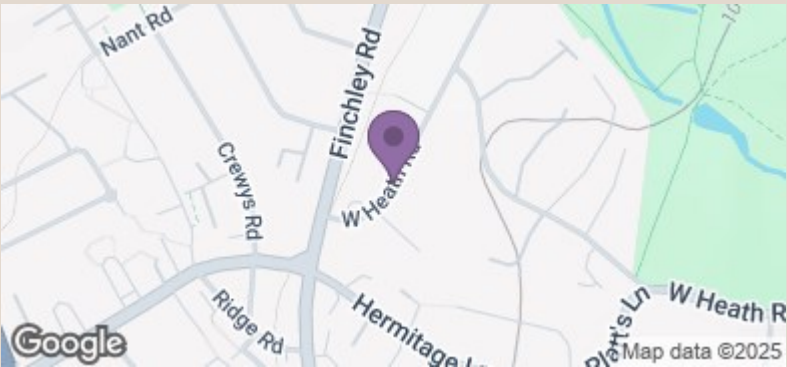
Niche Communications



Ground floor



First floor



Energy Efficiency Rating		Current	Potential
Very energy efficient - lower running costs			
(92 plus)	A		
(81-91)	B		
(69-80)	C		
(55-68)	D		
(39-54)	E		
(21-38)	F		
(1-20)	G		
Not energy efficient - higher running costs			
England & Wales		73	82
EU Directive 2002/91/EC			