



Apartment

Chippenham Road

London

W9 2AF

£519 Per week

Council Tax Band: D

FEATURES

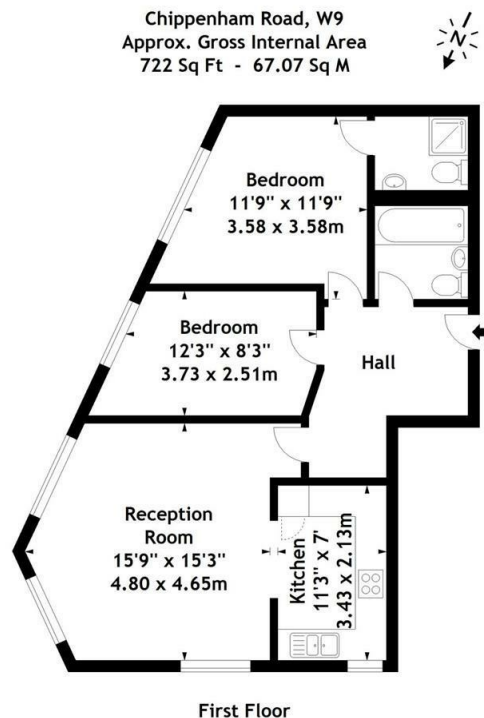


ADN
RESIDENTIAL



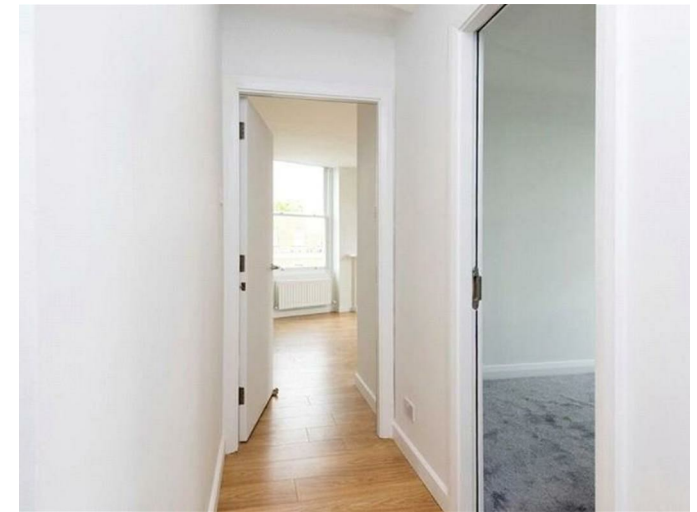
2 Bedroom Apartment located in London

A bright and spacious two bedroom apartment arranged over the third floor of a period property located in the heart of Maida Vale. This fantastic property offers modern fixtures and fittings and comprises, reception room with triple aspect windows, separate fitted kitchen, principal bedroom with en-suite bathroom, second bedroom and a family bathroom. Further benefits include wooden flooring and an abundance of natural light.



Measured in accordance with RICS guidelines. Every attempt is made to ensure accuracy, however all measurements are approximate. This floor plan is for illustrative purposes only and is not to scale.
© Datagraphy Ltd 2014
Photographs * Floorplans * Virtual Tours
Tel: 0845 643 4401 www.datagraphy.com

Agents Note: Whilst every care has been taken to prepare these particulars, they are for guidance purposes only. All measurements are approximate and are for general guidance purposes only and whilst every care has been taken to ensure their accuracy, they should not be relied upon and potential buyers are advised to recheck the measurements.



Energy Efficiency Rating		
	Current	Potential
Very energy efficient - lower running costs		
(92 plus) A		82
(81-91) B		
(69-80) C	73	
(55-68) D		
(39-54) E		
(21-38) F		
(1-20) G		
Not energy efficient - higher running costs		
England & Wales	EU Directive 2002/91/EC	

Call us on

020 7407 5155

info@adnresidential.co.uk

www.adnresidential.co.uk

ADN
RESIDENTIAL