



House - Terraced

**Vane Close
Hampstead
London
NW3 5UN**

£1,300 Per week

Council Tax Band: G

FEATURES

- Open Plan Kitchen/Reception Room
- 3 Bedrooms
- 3 Bathrooms
- Single Garage
- Off Street Parking
- Communal Garden Square
- Front Garden
- Balcony



3



3



1



D

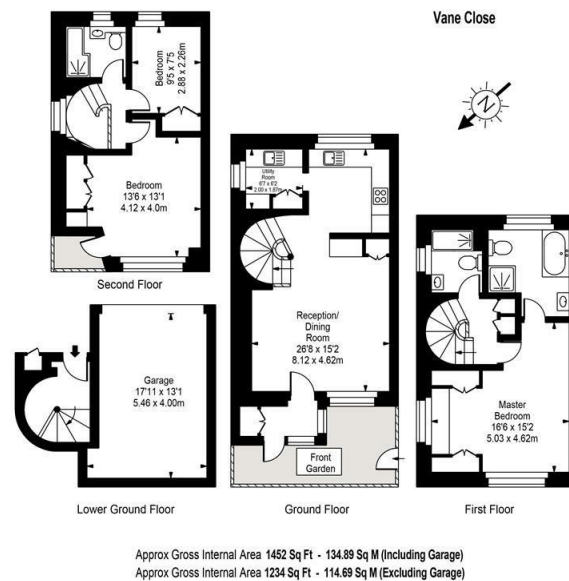


ADN
RESIDENTIAL



3 Bedroom House - Terraced located in London

A modern and well presented three bedroom family home offering well proportioned rooms located in the centre of Hampstead Village. This wonderful home benefits from having double glazed windows and off street parking and comprises, spacious open plan kitchen/ reception room with utility room, large principal bedroom with good storage and en-suite bathroom, two further bedrooms and two family shower rooms. Further benefits include private front garden, communal garden square and a single garage. Vane Close is ideally located 0.1m for the many shops, restaurants and transport facilities of the Village and the Heath.



Energy Efficiency Rating		
	Current	Potential
Very energy efficient - lower running costs		
(92 plus) A		
(81-91) B		
(69-80) C		80
(55-68) D	64	
(39-54) E		
(21-38) F		
(1-20) G		
Not energy efficient - higher running costs		
England & Wales	EU Directive 2002/91/EC	

Call us on

020 7407 5155

info@adnresidential.co.uk

www.adnresidential.co.uk

Agents Note: Whilst every care has been taken to prepare these particulars, they are for guidance purposes only. All measurements are approximate and are for general guidance purposes only and whilst every care has been taken to ensure their accuracy, they should not be relied upon and potential buyers are advised to recheck the measurements.

ADN
RESIDENTIAL