



House - Terraced

Relton Mews
Knightsbridge
London
SW7 1ET

£2,076 Per week

Council Tax Band: H

FEATURES

- 3 Bedrooms
- 3 Bathrooms
- Modern Fixtures
- 2 Reception Rooms
- Balcony
- Garage

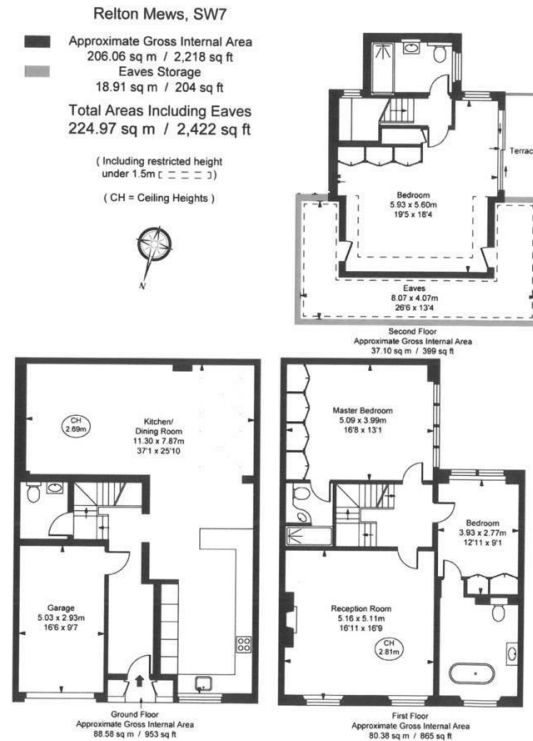


ADN
RESIDENTIAL



3 Bedroom House - Terraced located in London

A stunning and recently refurbished three double bedroom mews house located in the heart of Knightsbridge being only 0.2m from Harrods. This fantastic property is arranged over three floors and offers over 2400 sq ft of accommodation and comprises, spacious open plan kitchen/reception room and a second generous reception room both benefitting from wooden flooring, principal bedroom with good storage and en-suite shower room, two further bedrooms (one with a spacious en-suite bathroom) and a guest W/C. Additional benefits include a private balcony, outstanding storage and an integral garage suitable for one car.



Energy Efficiency Rating		
	Current	Potential
Very energy efficient - lower running costs		
(92 plus) A		
(81-91) B		
(69-80) C		
(55-68) D		
(39-54) E		
(21-38) F		
(1-20) G		
Not energy efficient - higher running costs		
England & Wales	EU Directive 2002/91/EC	

Call us on

020 7407 5155

info@adnresidential.co.uk

www.adnresidential.co.uk

ADN
RESIDENTIAL

Agents Note: Whilst every care has been taken to prepare these particulars, they are for guidance purposes only. All measurements are approximate and are for general guidance purposes only and whilst every care has been taken to ensure their accuracy, they should not be relied upon and potential buyers are advised to recheck the measurements.