



Apartment

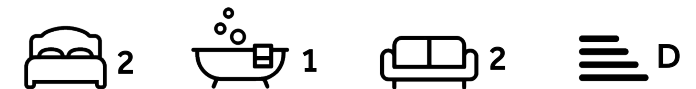
Temple Close London N3 3SB

£550 Per week

Council Tax Band: D

FEATURES

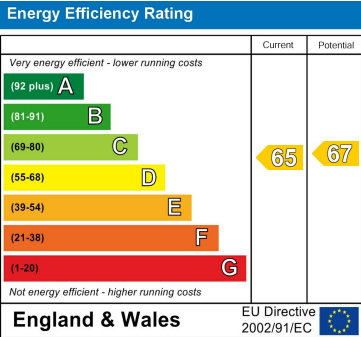
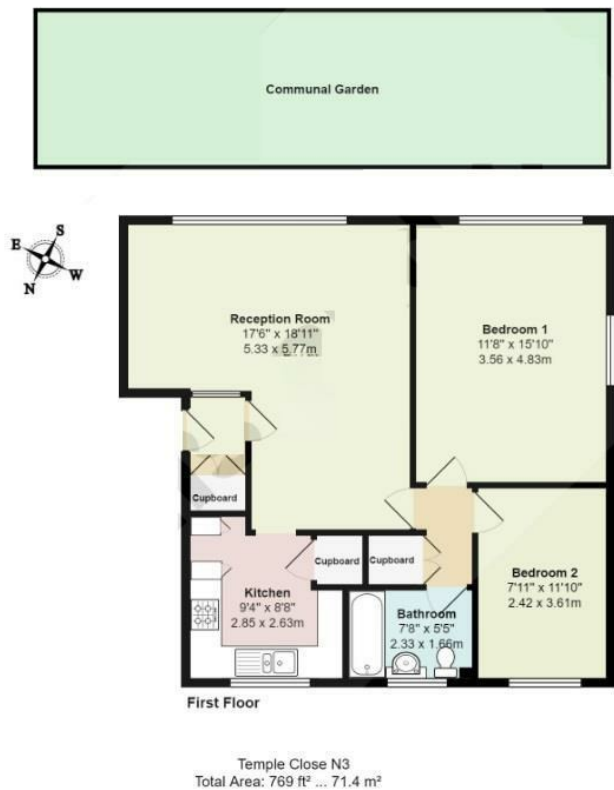
- Two Double Bedrooms
- Spacious Reception Room
- Family Bathroom
- Communal Gardens
- Double Glazed Windows



ADN
RESIDENTIAL

2 Bedroom Apartment located in London

A bright and spacious two double bedroom apartment arranged over the top floor of a popular purpose built block located in Finchley Central. This lovely property has been recently refurbished and comprises, generous reception room, separate fully fitted kitchen, two double bedrooms and a family bathroom. Additional benefits include double glazed windows and communal gardens. Temple Close is ideally located 0.8m from Finchley Central underground station. (Northern Line)



Call us on
020 7407 5155

info@adnresidential.co.uk
www.adnresidential.co.uk

Agents Note: Whilst every care has been taken to prepare these particulars, they are for guidance purposes only. All measurements are approximate and are for general guidance purposes only and whilst every care has been taken to ensure their accuracy, they should not be relied upon and potential buyers are advised to recheck the measurements.

