



House - Detached

**Rosemont Avenue
Finchley
London
N12 0BX**

£375 Per week

Council Tax Band: C

FEATURES

- Detached House
- Reception Room
- Bathroom
- Private Entrance
- 1 Bedroom
- Kitchen
- Air Conditioning

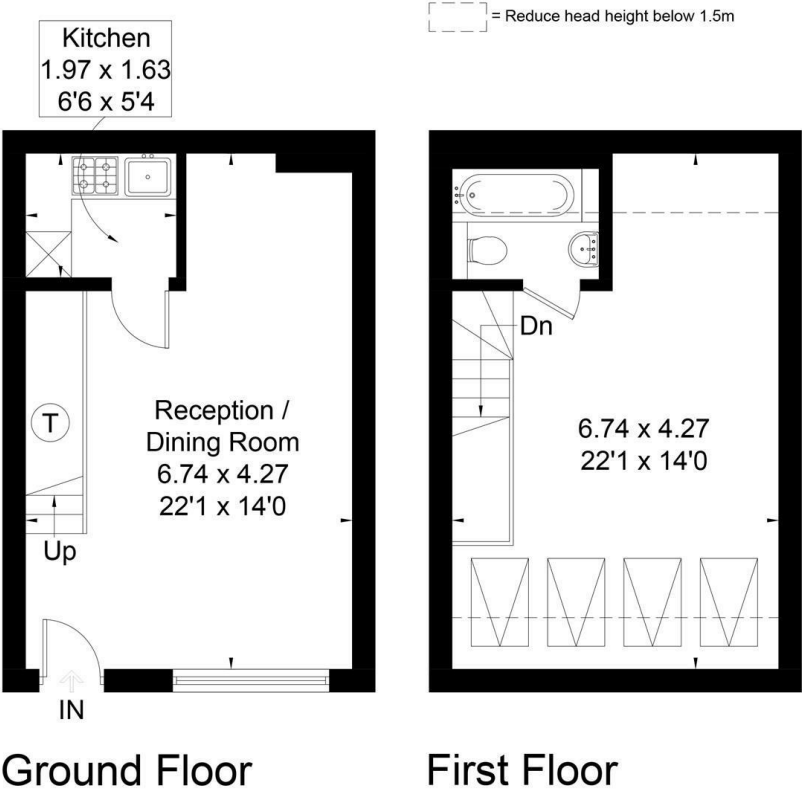


ADN
RESIDENTIAL



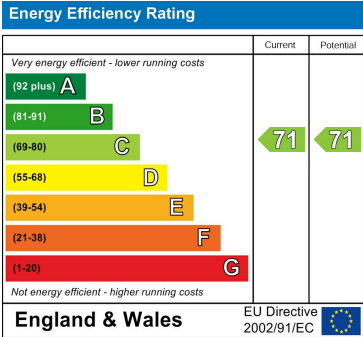
1 Bedroom House - Detached located in London

A detached one bedroom house located in the centre of North Finchley. This fantastic property has been finished to a high standard and comprises spacious reception room with wooden flooring, separate fitted kitchen and principal bedroom with ensuite bathroom. Further benefits include air conditioning and its own private entrance.



Approximate Area
Ground Floor = 28.9 sq m / 311 sq ft
First Floor = 28.8 sq m / 310 sq ft
Total = 57.7 sq m / 621 sq ft
Including Limited Use Area
(6.2 sq m / 67 sq ft)

Surveyed and drawn in accordance with the International Property Measurement Standards (IPMS 2: Residential)
fourwalls-group.com 244612



Call us on
020 7407 5155

info@adnresidential.co.uk
www.adnresidential.co.uk



Agents Note: Whilst every care has been taken to prepare these particulars, they are for guidance purposes only. All measurements are approximate and are for general guidance purposes only and whilst every care has been taken to ensure their accuracy, they should not be relied upon and potential buyers are advised to recheck the measurements.