



Flat - Purpose Built

**Finchley Road**

**London**

**NW3 6HT**

**£795 Per week**

**Council Tax Band: E**

### FEATURES

- 2 Bedrooms
- 2 Bathrooms
- Balcony
- Reception Room
- Fully Fitted Kitchen



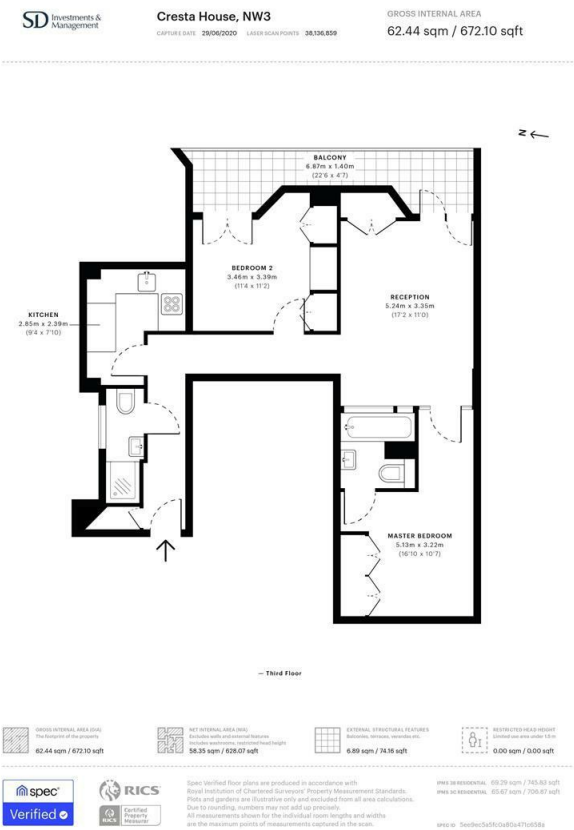
**ADN**  
RESIDENTIAL





# 2 Bedroom Flat - Purpose Built located in London

A well presented and interior designed apartment set on the third floor of a purpose built block located adjacent to Swiss Cottage tube station (Jubilee Line) and the shopping amenities of Finchley Road. This well proportioned property is offered furnished or unfurnished and comprises, spacious reception room with private balcony, fully fitted separate kitchen, 2 bedrooms and 2 bathrooms.



Energy Efficiency Rating		
	Current	Potential
Very energy efficient - lower running costs		
(92 plus) A		
(81-91) B	80	80
(69-80) C		
(55-68) D		
(39-54) E		
(21-38) F		
(1-20) G		
Not energy efficient - higher running costs		
England & Wales	EU Directive 2002/91/EC	

Call us on  
**020 7407 5155**

info@adnresidential.co.uk  
www.adnresidential.co.uk

Agents Note: Whilst every care has been taken to prepare these particulars, they are for guidance purposes only. All measurements are approximate and are for general guidance purposes only and whilst every care has been taken to ensure their accuracy, they should not be relied upon and potential buyers are advised to recheck the measurements.

