



Apartment

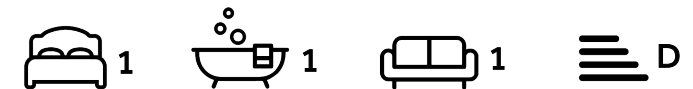
**Heath Street
Hampstead
London
NW3 1DN**

£685 Per week

Council Tax Band: F

FEATURES

- Duplex Apartment
- Reception Room
- Shower Room
- Wooden Flooring
- One Bedroom
- Kitchen
- Permit Parking



ADN
RESIDENTIAL



1 Bedroom Apartment located in London

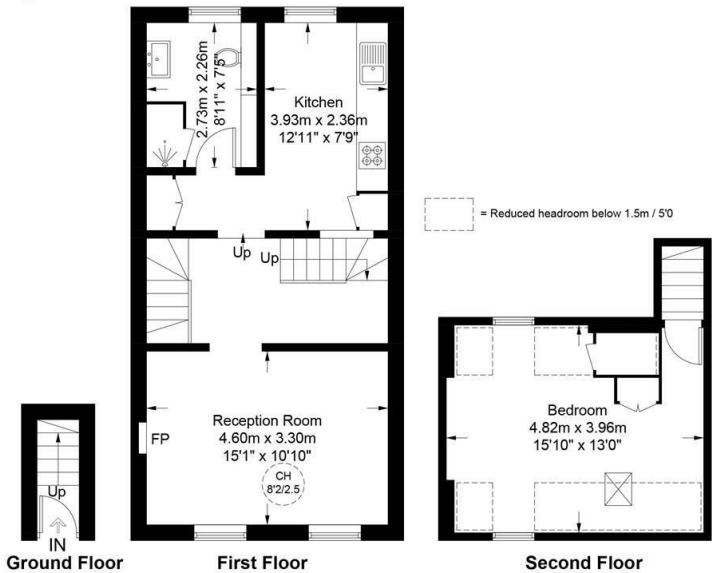
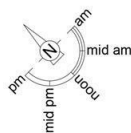
A superb one bedroom duplex apartment located 0.1m from Hampstead underground station (Northern Line) and the local amenities that the Village has to offer. This fantastic property benefits from having its own entrance and comprises, double aspect living room with wooden flooring, separate fully fitted kitchen with breakfast bar, principal bedroom with built in storage and a family shower room. Additional benefits include good storage and modern fixtures and fittings throughout.



Heath Street, NW3

Approximate Gross Internal Area = 712 sq ft / 66.2 sq m

Restricted Height = 75 sq ft / 7.0 sq m



Energy Efficiency Rating		
	Current	Potential
Very energy efficient - lower running costs		
(92 plus) A		
(81-91) B		
(69-80) C		
(55-68) D		
(39-54) E		
(21-38) F		
(1-20) G		
Not energy efficient - higher running costs		
England & Wales	EU Directive 2002/91/EC	

Call us on
020 7407 5155

info@adnresidential.co.uk
www.adnresidential.co.uk



This plan is for layout guidance only and is not drawn to scale unless stated. All dimensions, including windows, doors, and the Total Gross Internal Area (GIA), are approximate. For precise measurements, please consult a qualified architect or surveyor before making any decisions based on this plan.



Agents Note: Whilst every care has been taken to prepare these particulars, they are for guidance purposes only. All measurements are approximate and are for general guidance purposes only and whilst every care has been taken to ensure their accuracy, they should not be relied upon and potential buyers are advised to recheck the measurements.

