

LEASEHOLD



Apartment

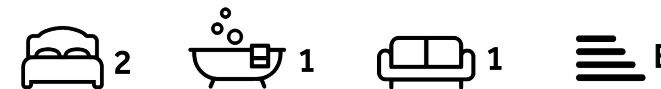
Haverstock Hill Belsize Park London NW3 2AY

Asking price
£485,000

Council Tax Band: E

FEATURES

- 2 Double Bedrooms
- Fully Fitted Kitchen
- Heating Included In Service Charge
- Spacious Reception Room
- Balcony
- Communal Gardens



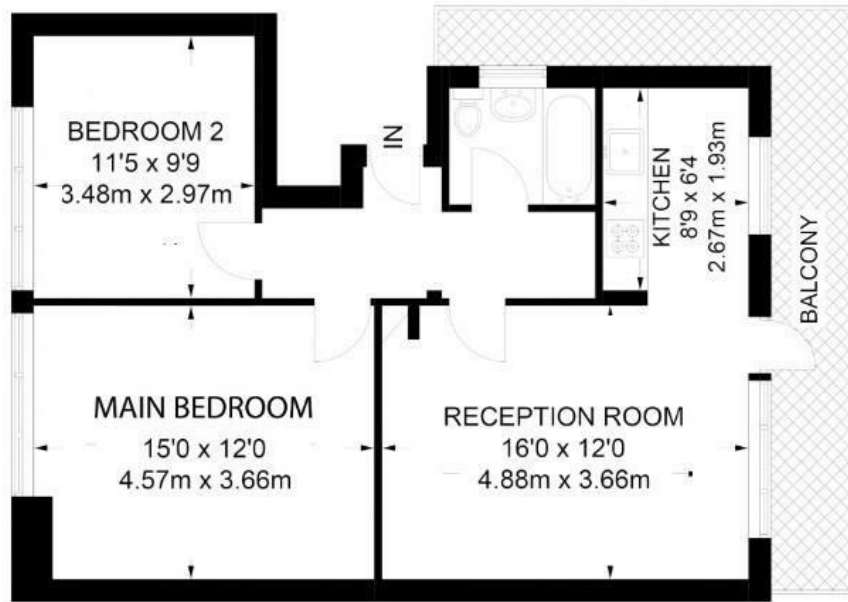
ADN
RESIDENTIAL



2 Bedroom Apartment located in London

A bright and well presented two double bedroom apartment arranged over the top (third) floor of a well presented period property located in Belsize Park. This wonderful property offers 638 sq ft of accommodation and comprises, semi open plan kitchen/reception room with wooden flooring and access onto a private balcony, two double bedrooms and a family bathroom. Additional benefits include communal gardens.

Ground Rent: £300.00PA
Service Charge £6800.00PA



THIRD FLOOR
638 SQ FT - 59.30 SQ M
NOT TO SCALE



Energy Efficiency Rating		
	Current	Potential
Very energy efficient - lower running costs		
(92 plus) A		
(81-91) B		
(69-80) C		
(55-68) D		
(39-54) E		
(21-38) F		
(1-20) G		
Not energy efficient - higher running costs		
England & Wales	49	64
EU Directive 2002/91/EC		

Call us on

020 7407 5155

info@adnresidential.co.uk

www.adnresidential.co.uk

ADN
RESIDENTIAL

Agents Note: Whilst every care has been taken to prepare these particulars, they are for guidance purposes only. All measurements are approximate and are for general guidance purposes only and whilst every care has been taken to ensure their accuracy, they should not be relied upon and potential buyers are advised to recheck the measurements.