



Apartment

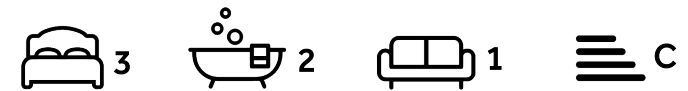
**East Heath Road
London
NW3 1BS**

£1,384 Per week

Council Tax Band: G

FEATURES

- 3 Bedrooms
- Chefs Kitchen
- Communal Gardens
- Off Street Parking For One Car
- Double Reception Room
- 2 Bathrooms
- Concierge
- Wooden Flooring



ADN
RESIDENTIAL



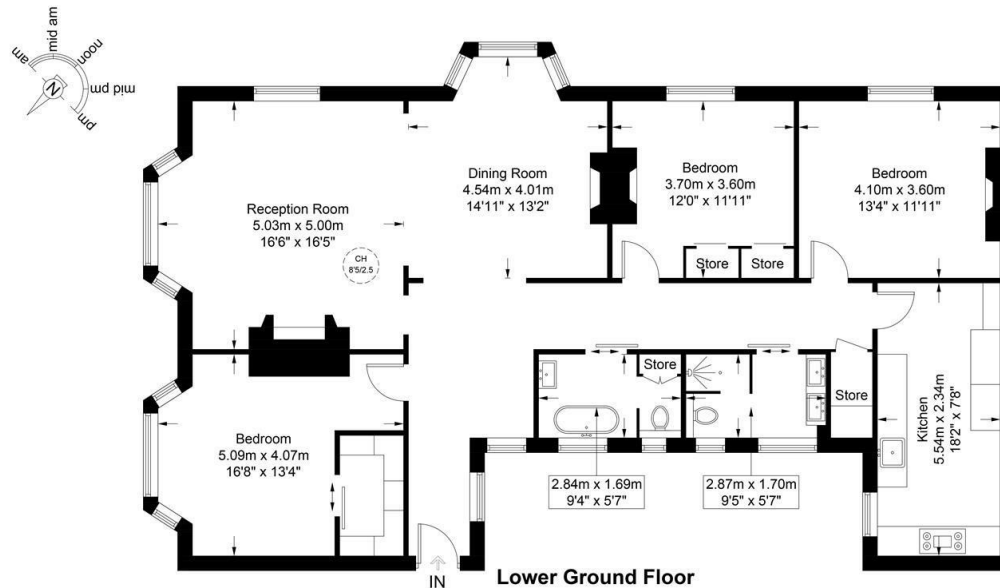
3 Bedroom Apartment located in London

A spectacular three double bedroom apartment offering just under 1500 sq ft of well planned accommodation situated in a popular block offering off street parking and concierge located next to Hampstead Heath. This fantastic property comprises, double reception room with bay window, separate fully fitted chefs kitchen, principal bedroom with walk in wardrobe, two further double bedrooms, family bathroom and a family shower room. Additional benefits include wooden flooring throughout, extensive communal gardens and an external storage cupboard.



The Pryors, NW3

Approximate Gross Internal Area = 1478 sq ft / 137.3 sq m



This plan is for layout guidance only and is not drawn to scale unless stated. All dimensions, including windows, doors, and the Total Gross Internal Area (GIA), are approximate. For precise measurements, please consult a qualified architect or surveyor before making any decisions based on this plan.



Energy Efficiency Rating		
	Current	Potential
Very energy efficient - lower running costs		
(92 plus) A		
(81-91) B		
(69-80) C	69	80
(55-68) D		
(39-54) E		
(21-38) F		
(1-20) G		
Not energy efficient - higher running costs		
England & Wales	EU Directive 2002/91/EC	

Call us on
020 7407 5155

info@adnresidential.co.uk
www.adnresidential.co.uk



Agents Note: Whilst every care has been taken to prepare these particulars, they are for guidance purposes only. All measurements are approximate and are for general guidance purposes only and whilst every care has been taken to ensure their accuracy, they should not be relied upon and potential buyers are advised to recheck the measurements.