



Apartment

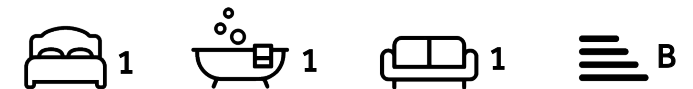
# Madoc Close Childs Hill London NW2 2BG

## £499,950

Council Tax Band: D

### FEATURES

- One Bedroom
- En-suite Shower Room
- Juliet Balcony
- First Floor
- One Bathroom
- Guest WC
- Gated Development
- Private Parking



**ADN**  
RESIDENTIAL



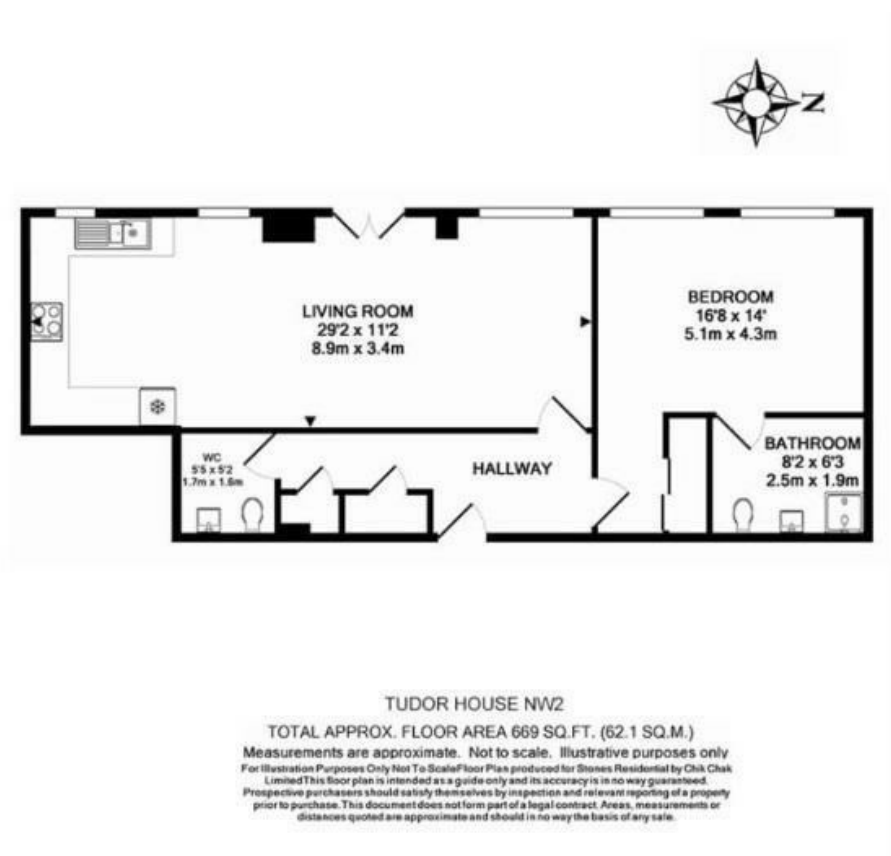


# 1 Bedroom Apartment located in London

A modern and larger than average (669 sq ft) one bedroom apartment, set within the luxurious and gated Tudor House development.

This beautifully designed apartment, which offers well-proportioned accommodation, features a bright and spacious open plan living room with Poggenpohl kitchen and Miele appliances, principal bedroom with built in wardrobes, an en-suite bathroom and additional guest W/C. The apartment further benefits from a Juliet balcony and a designated parking space.

Tudor House is ideally located 0.7m to Golders Green underground station (Northern Line) and 1.2m to Hampstead Heath.



Energy Efficiency Rating		
	Current	Potential
Very energy efficient - lower running costs		
(92 plus) <b>A</b>		
(81-91) <b>B</b>	84	84
(69-80) <b>C</b>		
(55-68) <b>D</b>		
(39-54) <b>E</b>		
(21-38) <b>F</b>		
(1-20) <b>G</b>		
Not energy efficient - higher running costs		
<b>England &amp; Wales</b>	EU Directive 2002/91/EC	

Call us on  
**020 7407 5155**

[info@adnresidential.co.uk](mailto:info@adnresidential.co.uk)  
[www.adnresidential.co.uk](http://www.adnresidential.co.uk)



Agents Note: Whilst every care has been taken to prepare these particulars, they are for guidance purposes only. All measurements are approximate and are for general guidance purposes only and whilst every care has been taken to ensure their accuracy, they should not be relied upon and potential buyers are advised to recheck the measurements.