



Apartment

Lancaster Grove Belsize Park London NW3 4PB

£600 Per week

Council Tax Band: E

FEATURES

- Private Roof Terrace
- One Bedroom
- Open Plan Kitchen/Reception Room
- Family Bathroom
- Wooden Flooring
- Double Glazed Windows



1



1



1



C



ADN
RESIDENTIAL



1 Bedroom Apartment located in London

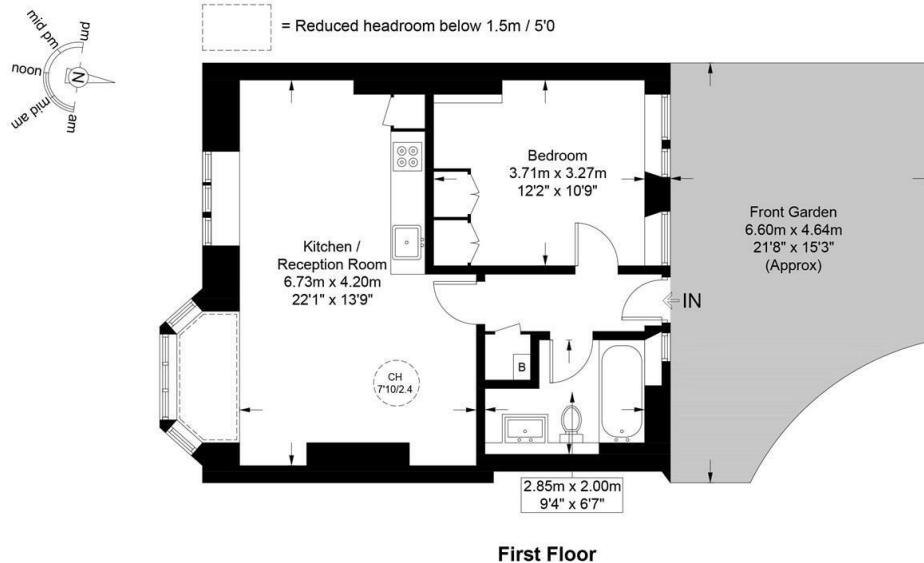
An outstanding one bedroom apartment offering 565 sq ft of accommodation and a private roof terrace forming part of the exclusive Belsize Park Firehouse Development. This fantastic property is situated on the first floor and comprises, spacious reception room with open plan kitchen and dual windows, principal bedroom with built in storage, family bathroom and a private terrace. Additional benefits include double glazed windows and wooden flooring. Belsize Park Firehouse is ideally located 0.4m from Belsize Park underground station (Northern Line) and 0.6m from Primrose Hill Park.



Belsize Park Firehouse, NW3

Approximate Gross Internal Area = 565 sq ft / 52.5 sq m

Restricted Height = 24 sq ft / 2.3 sq m



Energy Efficiency Rating		
	Current	Potential
Very energy efficient - lower running costs		
(92 plus) A		
(81-91) B		
(69-80) C	73	73
(55-68) D		
(39-54) E		
(21-38) F		
(1-20) G		
Not energy efficient - higher running costs		
England & Wales	EU Directive 2002/91/EC	

Call us on

020 7407 5155

info@adnresidential.co.uk

www.adnresidential.co.uk



This plan is for layout guidance only and is not drawn to scale unless stated. All dimensions, including windows, doors, and the Total Gross Internal Area (GIA), are approximate. For precise measurements, please consult a qualified architect or surveyor before making any decisions based on this plan.



Agents Note: Whilst every care has been taken to prepare these particulars, they are for guidance purposes only. All measurements are approximate and are for general guidance purposes only and whilst every care has been taken to ensure their accuracy, they should not be relied upon and potential buyers are advised to recheck the measurements.

