



Apartment

# Redington Gardens London NW3 7SA

## £1,650,000

Council Tax Band: G

### FEATURES

- Share Of Freehold
- 2 Bathrooms
- Off Street Parking
- 3 Bedrooms
- 33" Open Plan Kitchen/Reception Room
- Patio



3



2



1



C



**ADN**  
RESIDENTIAL





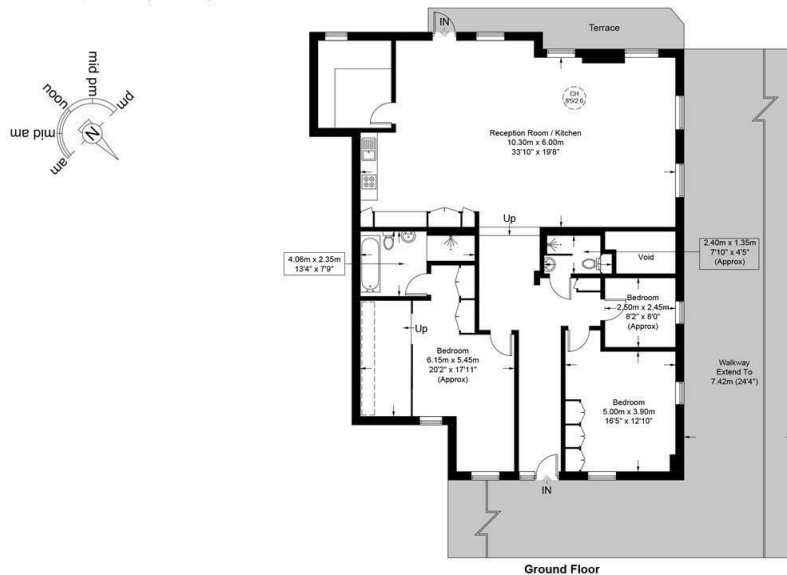
# 3 Bedroom Apartment located in London

A spacious three bedroom apartment arranged over the entire ground floor of a handsome period property located in Hampstead NW3. This wonderful apartment offers 1772 sq ft of accommodation and comprises, spacious open plan kitchen/reception room with access onto a private patio, principal bedroom with en-suite bathroom and built in storage, two further double bedrooms and a family shower room. Additional benefits include off street parking for one car and underfloor heating.

**Redington Gardens, NW3**

**Approximate Gross Internal Area = 1732 sq ft / 160.9 sq m**

Restricted Height = 21 sq ft / 2.0 sq m



This plan is for layout guidance only and is not drawn to scale unless stated. All dimensions, including windows, doors, and the Total Gross Internal Area (GIA), are approximate. For precise measurements, please consult a qualified architect or surveyor before making any decisions based on this plan.



Energy Efficiency Rating		
	Current	Potential
Very energy efficient - lower running costs		
(92 plus) <b>A</b>		
(81-91) <b>B</b>		<b>81</b>
(69-80) <b>C</b>	<b>70</b>	
(55-68) <b>D</b>		
(39-54) <b>E</b>		
(21-38) <b>F</b>		
(1-20) <b>G</b>		
Not energy efficient - higher running costs		
<b>England &amp; Wales</b>	EU Directive 2002/91/EC	

Call us on

**020 7407 5155**

[info@adnresidential.co.uk](mailto:info@adnresidential.co.uk)

[www.adnresidential.co.uk](http://www.adnresidential.co.uk)

**ADN**  
RESIDENTIAL

Agents Note: Whilst every care has been taken to prepare these particulars, they are for guidance purposes only. All measurements are approximate and are for general guidance purposes only and whilst every care has been taken to ensure their accuracy, they should not be relied upon and potential buyers are advised to recheck the measurements.