



Flat

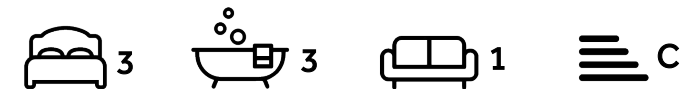
St. Anns Terrace
London
NW8 6PJ

£995 Per week

Council Tax Band: E

FEATURES

- 3 Double Bedrooms
- 3 Bathrooms
- Private Entrance
- Triplex Apartment
- Private Patio
- Spacious Reception Room
- Wooden Flooring



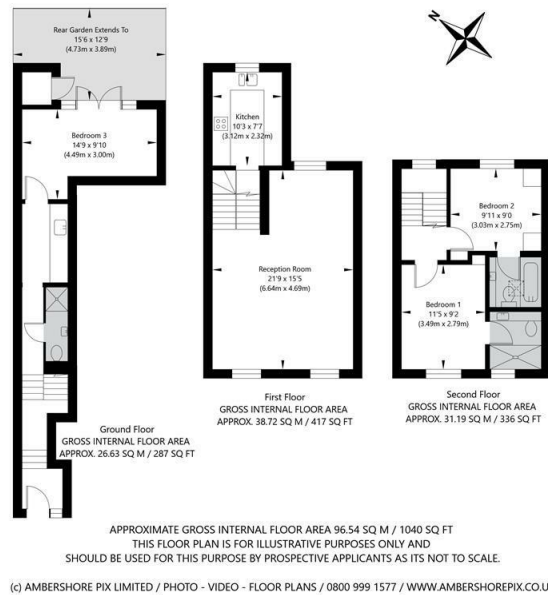
ADN
RESIDENTIAL



3 Bedroom Flat located in London

A modern and well presented three double bedroom triplex apartment situated in the centre of St Johns Wood. This fantastic property offers well proportioned rooms and comprises: spacious reception room with floor to ceiling windows, separate fully fitted kitchen, three double bedrooms, 2 bathrooms, shower room and a private patio. Additional benefits include its own private entrance and wooden flooring.

St Ann's Terrace, London NW8 6PJ



Energy Efficiency Rating		
	Current	Potential
Very energy efficient - lower running costs		
(92 plus) A		
(81-91) B		
(69-80) C	69	75
(55-68) D		
(39-54) E		
(21-38) F		
(1-20) G		
Not energy efficient - higher running costs		
England & Wales	EU Directive 2002/91/EC	

Call us on
020 7407 5155

info@adnresidential.co.uk
www.adnresidential.co.uk



Agents Note: Whilst every care has been taken to prepare these particulars, they are for guidance purposes only. All measurements are approximate and are for general guidance purposes only and whilst every care has been taken to ensure their accuracy, they should not be relied upon and potential buyers are advised to recheck the measurements.