



House

**Creswick Walk  
Temple Fortune  
London  
NW11 6AN**

**£774,950**

**Council Tax Band: F**

**FEATURES**

- South Facing Private Garden
- 3 Bedrooms
- Fully Fitted Kitchen
- Family Bathroom
- Permit Parking

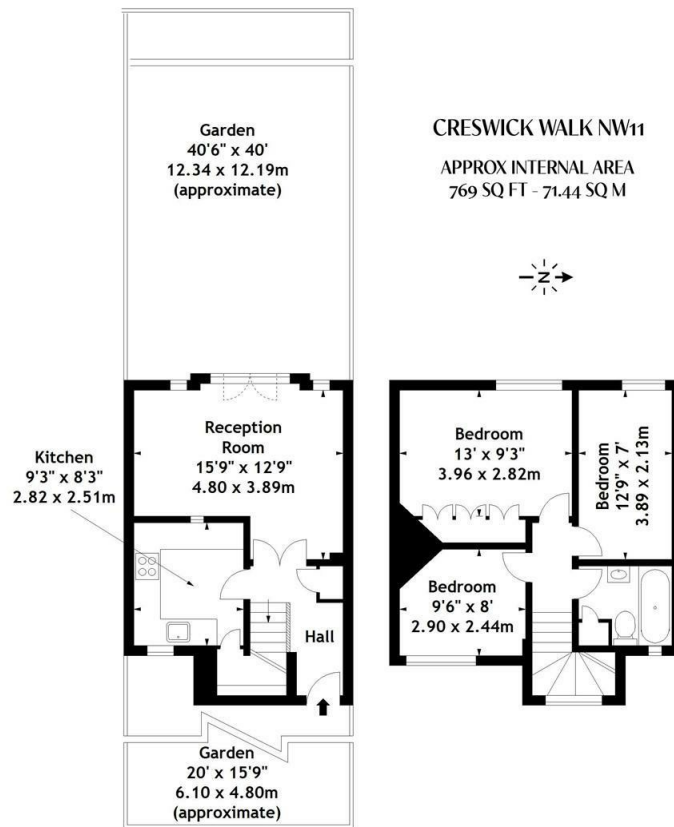


**ADN**  
RESIDENTIAL



# 3 Bedroom House located in London

A well presented three bedroom cottage ideally positioned 0.2m from the local amenities that Temple Fortune has to offer. This quaint property benefits from having modern fixtures and fittings and comprises, spacious reception room with French doors onto a superb south facing private garden, separate fully fitted kitchen, principal bedroom with built in storage, two further bedrooms and a family bathroom.



Energy Efficiency Rating		
	Current	Potential
Very energy efficient - lower running costs		
(92 plus) A		86
(81-91) B		
(69-80) C	65	
(55-68) D		
(39-54) E		
(21-38) F		
(1-20) G		
Not energy efficient - higher running costs		
England & Wales		EU Directive 2002/91/EC

Call us on

**020 7407 5155**

[info@adnresidential.co.uk](mailto:info@adnresidential.co.uk)

[www.adnresidential.co.uk](http://www.adnresidential.co.uk)

**ADN**  
RESIDENTIAL

Agents Note: Whilst every care has been taken to prepare these particulars, they are for guidance purposes only. All measurements are approximate and are for general guidance purposes only and whilst every care has been taken to ensure their accuracy, they should not be relied upon and potential buyers are advised to recheck the measurements.