



Apartment

Flat 19

Maresfield Gardens

Hampstead

London

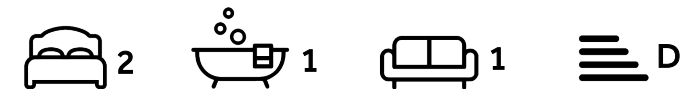
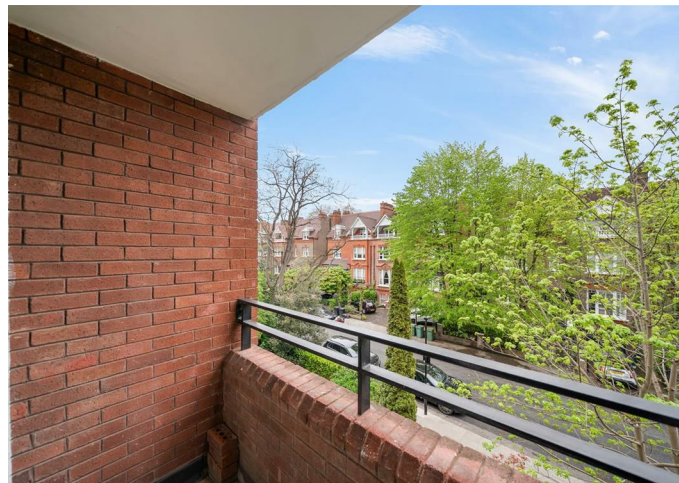
NW3 5SL

£925,000

Council Tax Band: G

FEATURES

- 2 Double Bedrooms
- Communal Gardens
- Separate Kitchen
- Guest W.C
- 2 Balconies
- Spacious Reception Room
- Family Bathroom



ADN
RESIDENTIAL



2 Bedroom Apartment located in London

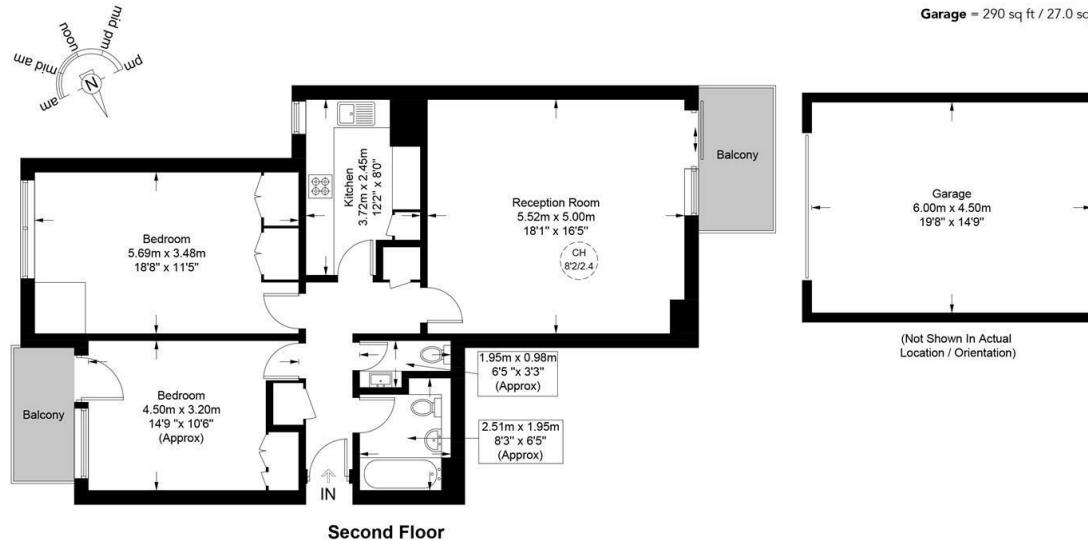
A spacious and well presented two double bedroom apartment arranged on the second floor of a purpose-built block and located on a tree lined road in Hampstead NW3. This lovely apartment offers circa 931 sq ft of well planned accommodation and comprises, spacious reception room with private balcony overlooking the communal gardens, separate fully fitted kitchen, two double bedrooms (one with another private balcony) family bathroom and a guest W.C. Additional benefits include a separate garage, lift and double glazed windows. Maresfield Gardens is ideally located 0.1m from Finchley Road underground station (Jubilee & Metropolitan lines)



Mourne House, NW3

Approximate Gross Internal Area = 1221 sq ft / 113.4 sq m

Garage = 290 sq ft / 27.0 sq m



Energy Efficiency Rating		
	Current	Potential
Very energy efficient - lower running costs		
(92 plus) A		
(81-91) B		
(69-80) C		
(55-68) D		
(39-54) E		
(21-38) F		
(1-20) G		
Not energy efficient - higher running costs		
England & Wales	68	78
	EU Directive 2002/91/EC	

Call us on

020 7407 5155

info@adnresidential.co.uk

www.adnresidential.co.uk



This plan is for layout guidance only and is not drawn to scale unless stated. All dimensions, including windows, doors, and the Total Gross Internal Area (GIA), are approximate. For precise measurements, please consult a qualified architect or surveyor before making any decisions based on this plan.



Agents Note: Whilst every care has been taken to prepare these particulars, they are for guidance purposes only. All measurements are approximate and are for general guidance purposes only and whilst every care has been taken to ensure their accuracy, they should not be relied upon and potential buyers are advised to recheck the measurements.

