



Apartment

**Fitzjohns Avenue
London
NW3 6PH**

£1,200 Per week

Council Tax Band: G

FEATURES

- Two Double Bedrooms
- 2 Bathrooms
- 2 Balconies
- Open Plan Kitchen / Reception
- Modern
- Communal Gardens
- Lift

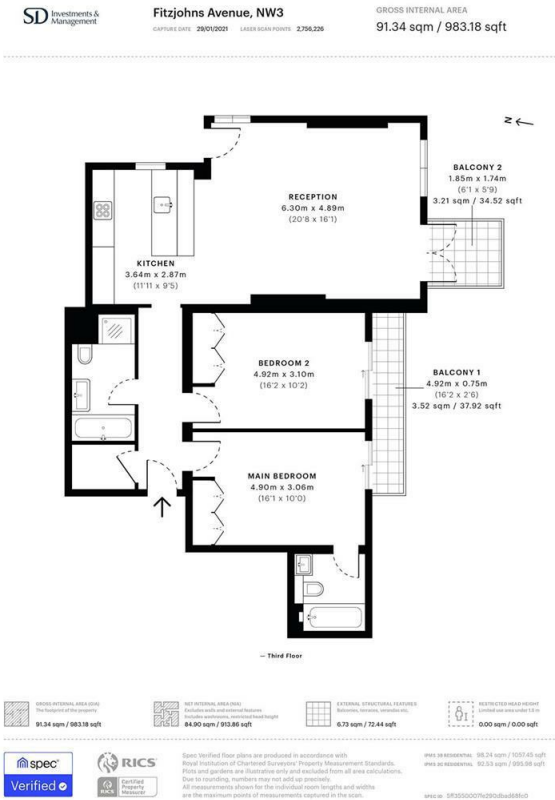


ADN
RESIDENTIAL



2 Bedroom Apartment located in London

A superb 2 double bedroom high specification apartment situated in a period property located on Fitzjohns Avenue NW3 ideally located 0.2m from Hampstead Underground Station (Northern Line) and the local amenities that the Village has to offer. All apartments can be available furnished or unfurnished and are finished to the highest of standards. Further benefits include beautiful communal gardens and a lift.



Energy Efficiency Rating		
	Current	Potential
Very energy efficient - lower running costs		
(92 plus) A		
(81-91) B	82	82
(69-80) C		
(55-68) D		
(39-54) E		
(21-38) F		
(1-20) G		
Not energy efficient - higher running costs		
England & Wales		EU Directive 2002/91/EC

Call us on
020 7407 5155

info@adnresidential.co.uk
www.adnresidential.co.uk



Agents Note: Whilst every care has been taken to prepare these particulars, they are for guidance purposes only. All measurements are approximate and are for general guidance purposes only and whilst every care has been taken to ensure their accuracy, they should not be relied upon and potential buyers are advised to recheck the measurements.