



Apartment

Neale Close London N2 0LF

£495 Per week

Council Tax Band: D

FEATURES

- 2 Double Bedrooms
- Reception Room
- Fitted Kitchen
- Private Entrance
- Private Garden
- Wooden Flooring
- Balcony

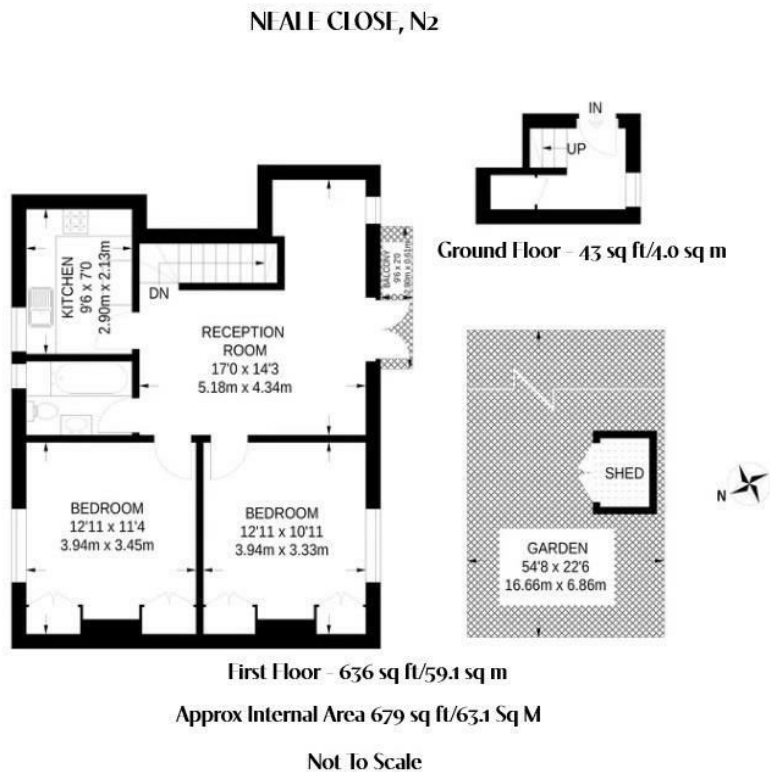


ADN
RESIDENTIAL



2 Bedroom Apartment located in London

A bright and spacious first floor two double bedroom maisonette located in Hampstead Garden Suburb. This wonderful property benefits from having two double bedrooms, spacious reception room with balcony, separate fitted kitchen and a family bathroom. Additional benefits include wooden flooring and a rear garden.



Energy Efficiency Rating		
	Current	Potential
Very energy efficient - lower running costs		
(92 plus) A		
(81-91) B		
(69-80) C		71
(55-68) D	57	
(39-54) E		
(21-38) F		
(1-20) G		
Not energy efficient - higher running costs		
England & Wales	EU Directive 2002/91/EC	

Call us on
020 7407 5155

info@adnresidential.co.uk
www.adnresidential.co.uk



Agents Note: Whilst every care has been taken to prepare these particulars, they are for guidance purposes only. All measurements are approximate and are for general guidance purposes only and whilst every care has been taken to ensure their accuracy, they should not be relied upon and potential buyers are advised to recheck the measurements.