



House

**Creswick Walk
Temple Fortune
London
NW11 6AN**

£774,950

Council Tax Band: F

FEATURES

- South Facing Private Garden
- 3 Bedrooms
- Fully Fitted Kitchen
- Family Bathroom
- Permit Parking

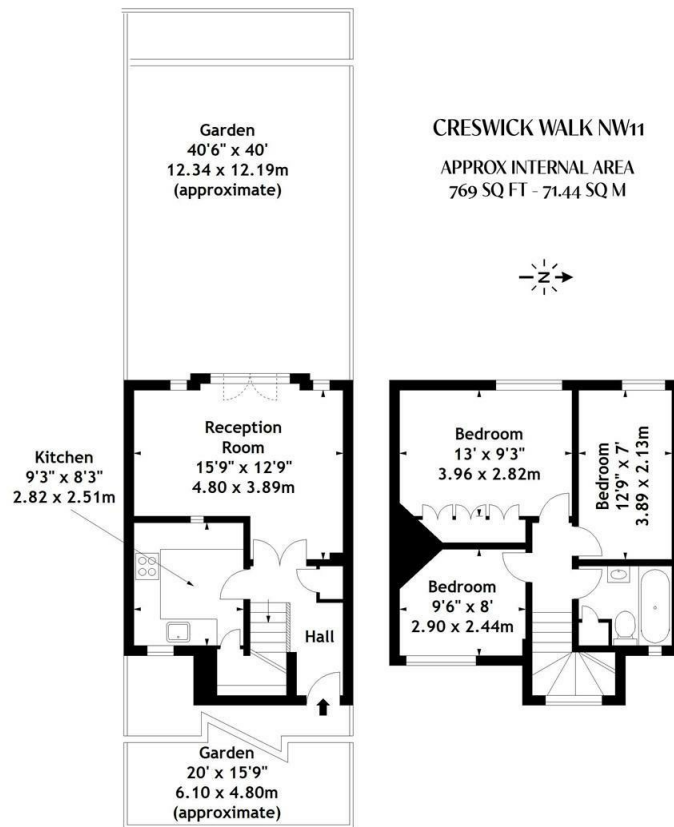


ADN
RESIDENTIAL



3 Bedroom House located in London

A well presented three bedroom cottage ideally positioned 0.2m from the local amenities that Temple Fortune has to offer. This quaint property benefits from having modern fixtures and fittings and comprises, spacious reception room with French doors onto a superb south facing private garden, separate fully fitted kitchen, principal bedroom with built in storage, two further bedrooms and a family bathroom.



Energy Efficiency Rating		Current	Potential
Very energy efficient - lower running costs			
(92 plus)	A		
(81-91)	B		86
(69-80)	C	65	
(55-68)	D		
(39-54)	E		
(21-38)	F		
(1-20)	G		
Not energy efficient - higher running costs			
England & Wales		EU Directive 2002/91/EC	

Call us on

020 7407 5155

info@adnresidential.co.uk

www.adnresidential.co.uk

Agents Note: Whilst every care has been taken to prepare these particulars, they are for guidance purposes only. All measurements are approximate and are for general guidance purposes only and whilst every care has been taken to ensure their accuracy, they should not be relied upon and potential buyers are advised to recheck the measurements.

ADN
RESIDENTIAL