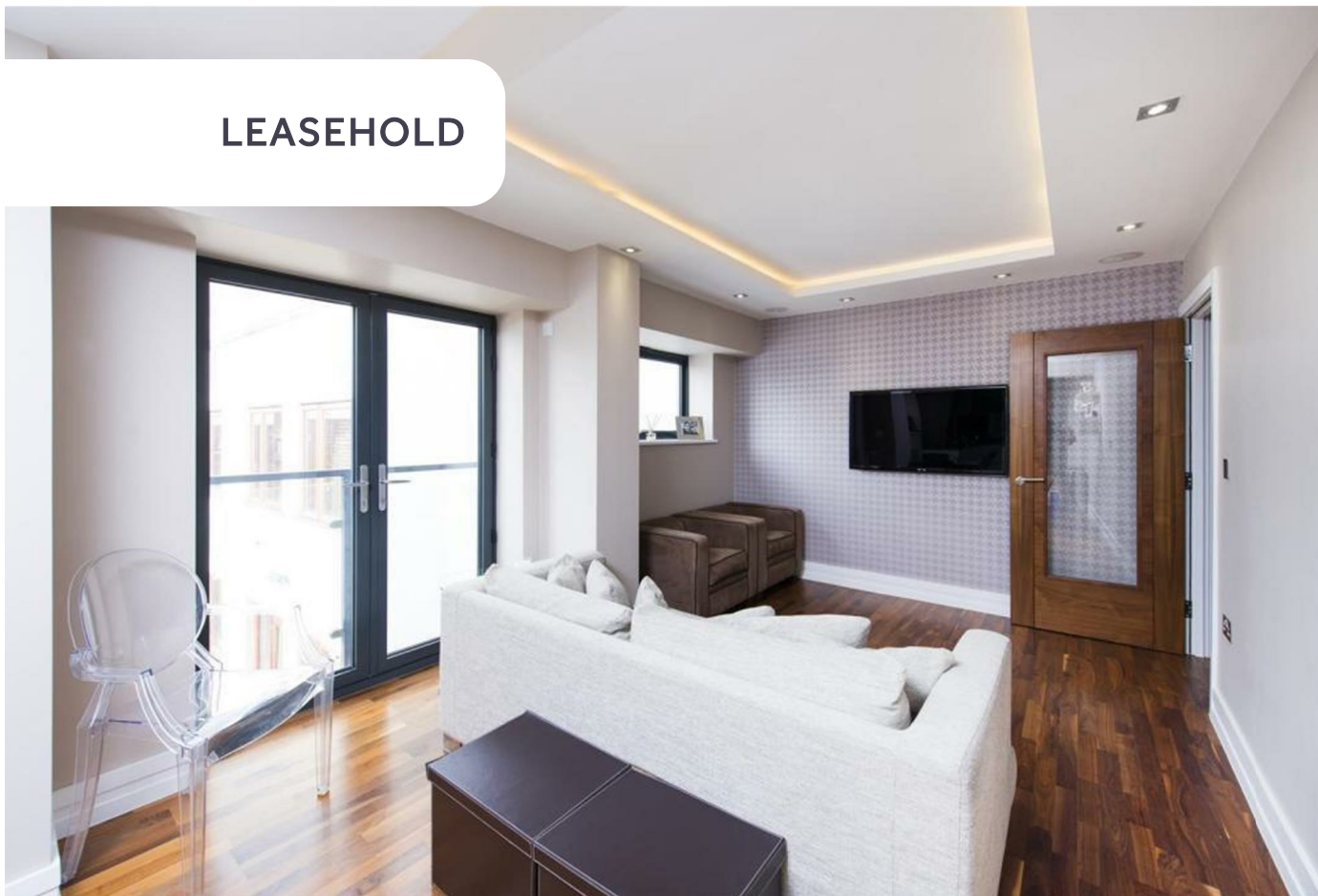


LEASEHOLD



Apartment

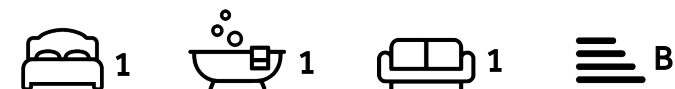
# Madoc Close Childs Hill London NW2 2BG

Asking price  
**£500,000**

Council Tax Band: D

## FEATURES

- One Bedroom
- En-suite Shower Room
- Juliet Balcony
- First Floor
- One Bathroom
- Guest WC
- Gated Development
- Private Parking



**ADN**  
RESIDENTIAL



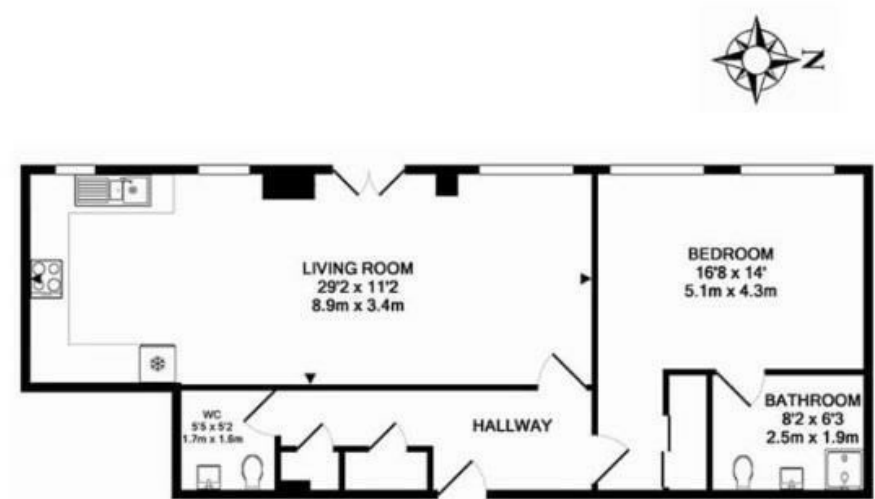


# 1 Bedroom Apartment located in London

A modern and larger than average (669 sq ft) one bedroom apartment, set within the luxurious and gated Tudor House development.

This beautifully designed apartment, which offers well-proportioned accommodation, features a bright and spacious open plan living room with Poggenpohl kitchen and Miele appliances, principal bedroom with built in wardrobes, an en-suite bathroom and additional guest W/C. The apartment further benefits from a Juliet balcony and a designated parking space.

Tudor House is ideally located 0.7m to Golders Green underground station (Northern Line) and 1.2m to Hampstead Heath.



**TUDOR HOUSE NW2**  
TOTAL APPROX. FLOOR AREA 669 SQ.FT. (62.1 SQ.M.)  
Measurements are approximate. Not to scale. Illustrative purposes only.  
For Illustration Purposes Only Not To Scale Floor Plan produced for Stones Residential by Chik Chik Limited  
This floor plan is intended as a guide only and its accuracy is in no way guaranteed.  
Prospective purchasers should satisfy themselves by inspection and relevant reporting of a property prior to purchase. This document does not form part of a legal contract. Areas, measurements or distances quoted are approximate and should in no way be the basis of any sale.

Energy Efficiency Rating		
	Current	Potential
Very energy efficient - lower running costs		
(92 plus) A		
(81-91) B	84	84
(69-80) C		
(55-68) D		
(39-54) E		
(21-38) F		
(1-20) G		
Not energy efficient - higher running costs		
England & Wales		EU Directive 2002/91/EC

Call us on  
**020 7407 5155**

[info@adnresidential.co.uk](mailto:info@adnresidential.co.uk)  
[www.adnresidential.co.uk](http://www.adnresidential.co.uk)



Agents Note: Whilst every care has been taken to prepare these particulars, they are for guidance purposes only. All measurements are approximate and are for general guidance purposes only and whilst every care has been taken to ensure their accuracy, they should not be relied upon and potential buyers are advised to recheck the measurements.