



House - Terraced

**Court Close, St. Johns  
Wood Park  
London  
NW8 6NN**

**£2,950 Per week**

**Council Tax Band: G**

### FEATURES

- 4 Double Bedrooms
- Conservatory
- 4 Bathrooms
- Private Garden
- Parking Available
- Open Plan Kitchen/Family Room
- Principal Bedroom Suite
- Study
- Roof Terrace



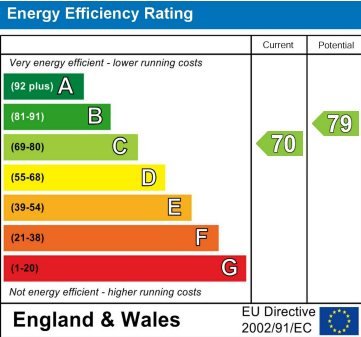
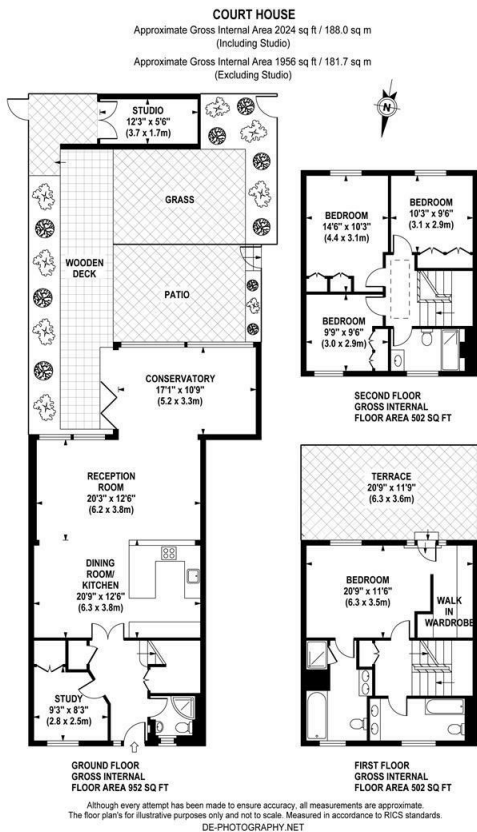
**ADN**  
RESIDENTIAL





# 4 Bedroom House - Terraced located in London

A modern and well presented four double bedroom family home located 0.6m from St Johns Wood underground station. (Jubilee Line) This fantastic property offers modern fixtures and fittings and comprises, spacious open plan kitchen/family room with conservatory leading onto a private garden, principal bedroom with en-suite bathroom, walk in wardrobe and private roof terrace, a further three bedroom and 3 bathrooms and a separate study. Additional benefits include double glazed windows, a studio at the rear of the garden and off street parking available.



Call us on  
**020 7407 5155**  
  
info@adnresidential.co.uk  
www.adnresidential.co.uk

Agents Note: Whilst every care has been taken to prepare these particulars, they are for guidance purposes only. All measurements are approximate and are for general guidance purposes only and whilst every care has been taken to ensure their accuracy, they should not be relied upon and potential buyers are advised to recheck the measurements.

