



12 Cardinal Mews, Vestry Close, Andover, SP10 1PB

Asking Price £160,000





12 Cardinal Mews, Vestry Close

Andover, SP10 3FY

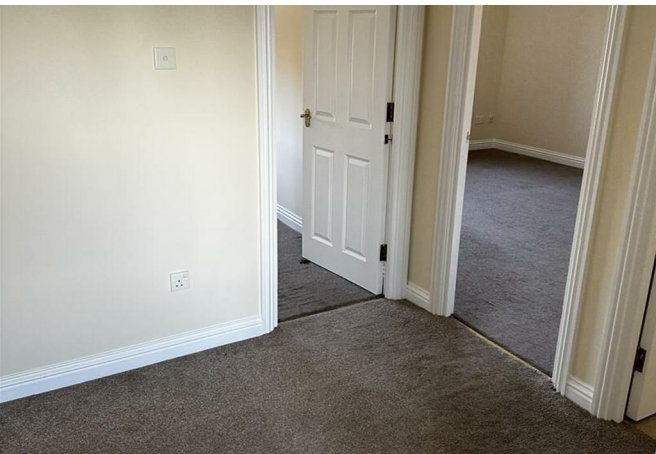
- No onward chain
- Close to station
- Master bedroom with ensuite
- Modern house built in 1999
- 678 sq ft of living space
- Ideal for first-time buyers
- Allocated parking space
- Two spacious bedrooms
- Convenient Andover location
- Viewing recommended

Nestled in the charming Cardinal Mews on Vestry Close, Andover, this delightful top floor flat offers a perfect blend of comfort and convenience. Spanning an impressive 678 square feet, the property features two well-proportioned bedrooms, making it an ideal choice for couples, small families, or those seeking a spacious home office.

The flat boasts a welcoming reception room, providing a warm and inviting space for relaxation or entertaining guests. With two bathrooms, including an en-suite, the property ensures ample privacy and convenience for its residents. Built in 1999, this modern flat benefits from contemporary design and efficient use of space, making it a practical choice for modern living.

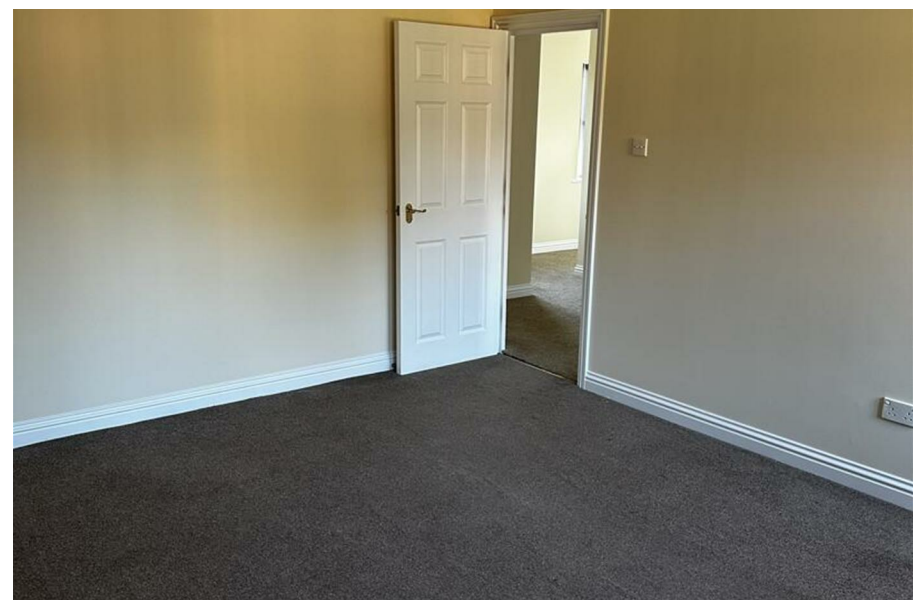
Situated in a peaceful area, Cardinal Mews offers a sense of community while remaining close to local amenities and transport links. Whether you are looking to enjoy the vibrant town of Andover or seeking a tranquil retreat, this property is sure to meet your needs.

Do not miss the opportunity to make this lovely flat your new home.





Directions





Floor Plans



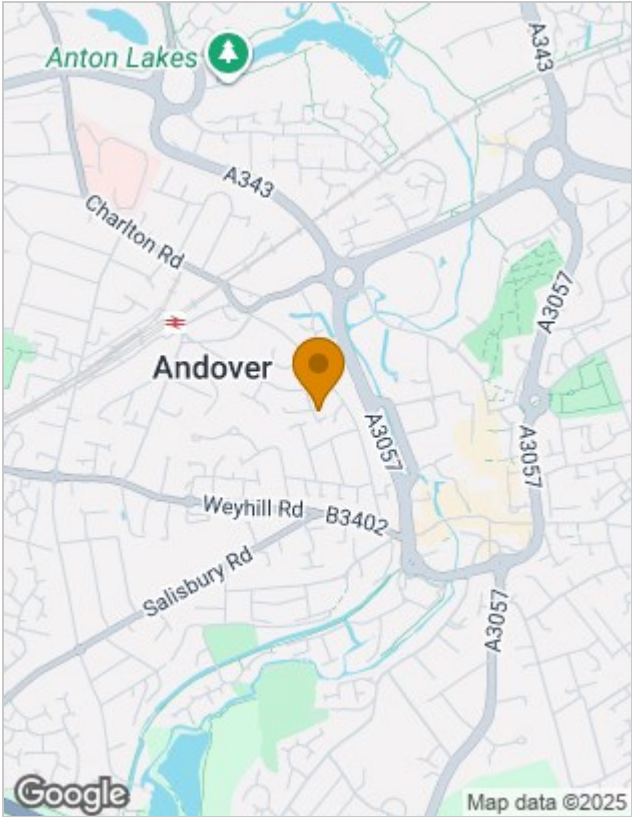
Viewing

Please contact our office on 01264 710776 if you wish to arrange a viewing appointment for this property or require further information.

The particulars are set out as a general outline only for the guidance of intended purchasers or lessees, and do not constitute, any part of a contract. Nothing in these particulars shall be deemed to be a statement that the property is in good structural condition or otherwise nor that any of the services, appliances, equipment or facilities are in good working order. Purchasers should satisfy themselves of this prior to purchasing.

Suite 520, Andover House George Yard, Andover, Hampshire, SP10 1PB
Tel: 01264 710776 Email: info@ashwellsestateagents.co.uk www.ashwellsestateagents.co.uk

Location Map



Energy Performance Graph

