



Welcome to

MILL STREAM VIEW

HOMES BY
CREATE

THE DEVELOPMENT

Mill Stream View is a gated development located on Mill Lane in Adwick Le Street, Doncaster, South Yorkshire, DN6 7GB. The development comprises four executive five-bedroom detached homes, each designed for modern living and finished to high standards.

Features of these properties include open-plan kitchens with integrated appliances, underfloor heating on the ground floor, bi-fold doors leading to gardens, and a 10-year warranty. The homes are situated in a village setting, offering a balance between tranquility and accessibility.



Four



120m²



Five





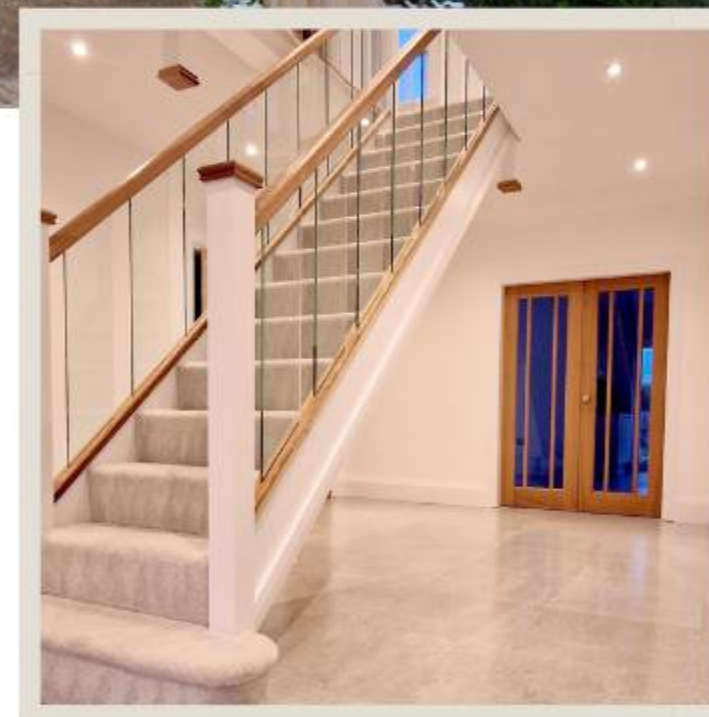
PASTURES VIEW
£550,000



CORN VIEW
£500,000



OAKLAND VIEW
£515,000



GRASSLANDS VIEW
SOLD

Ready to occupy **December 2024**
Enquire now to book in your viewing

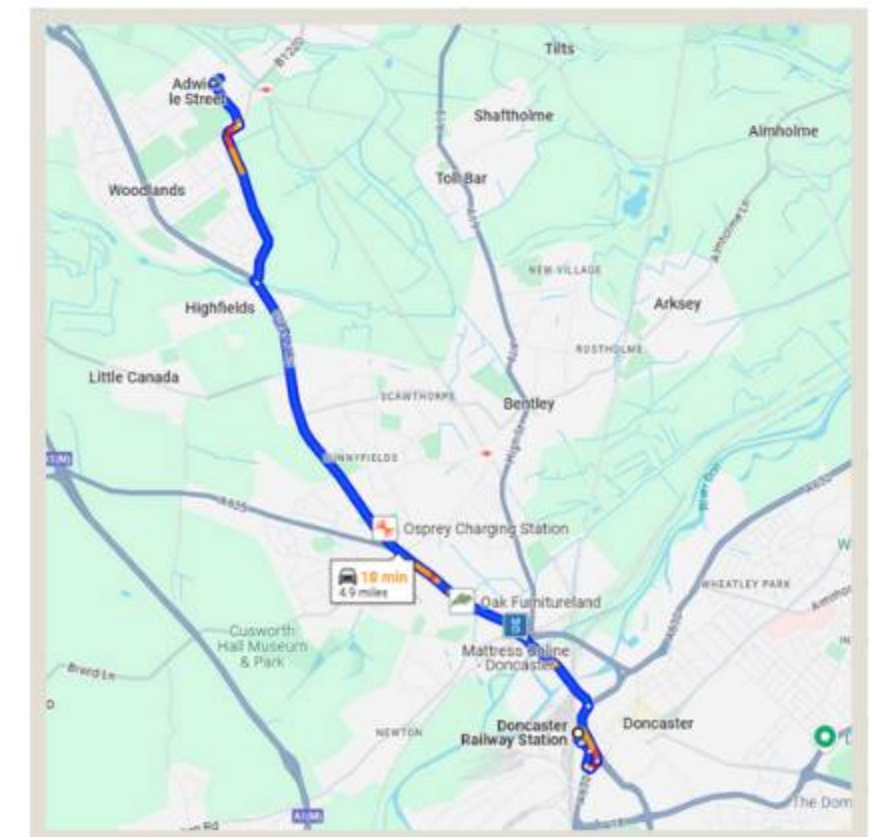
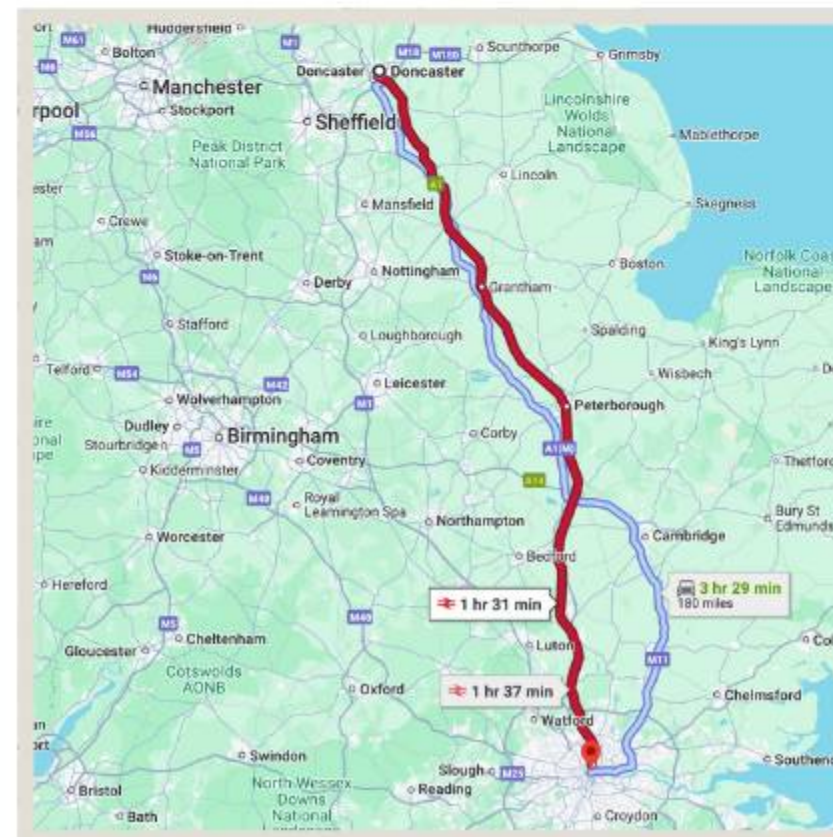
Call **0330 232 0140**
Email **sales@createproperties.co.uk**



TRANSPORT LINKS

Mill Stream View offers the perfect blend of tranquil village living with excellent transport connections. Conveniently located just minutes from the A1(M) and M62 motorways, the development provides seamless access to major cities such as Leeds, Sheffield, and York.

Doncaster Train Station, a short drive away, connects you to London in under two hours via high-speed rail.





**10 Year
Warranty**

**Open Plan
Design**

**Gated Private
Living**

**Luxury Family
Living**

5 Bedroom

4 Bathroom

ARRANGE YOUR VIEWING

Call **0330 232 0140** or email
sales@createproperties.co.uk

HOMES BY
CREATE

These beautifully designed properties combine modern luxury with timeless elegance. Whether you're seeking space for a growing family or a serene retreat, Mill Stream View is the ideal place to create lasting memories.

With every detail carefully considered, all that's left is for you to make it your own.

YOUR NEW CHAPTER BEGINS HERE.