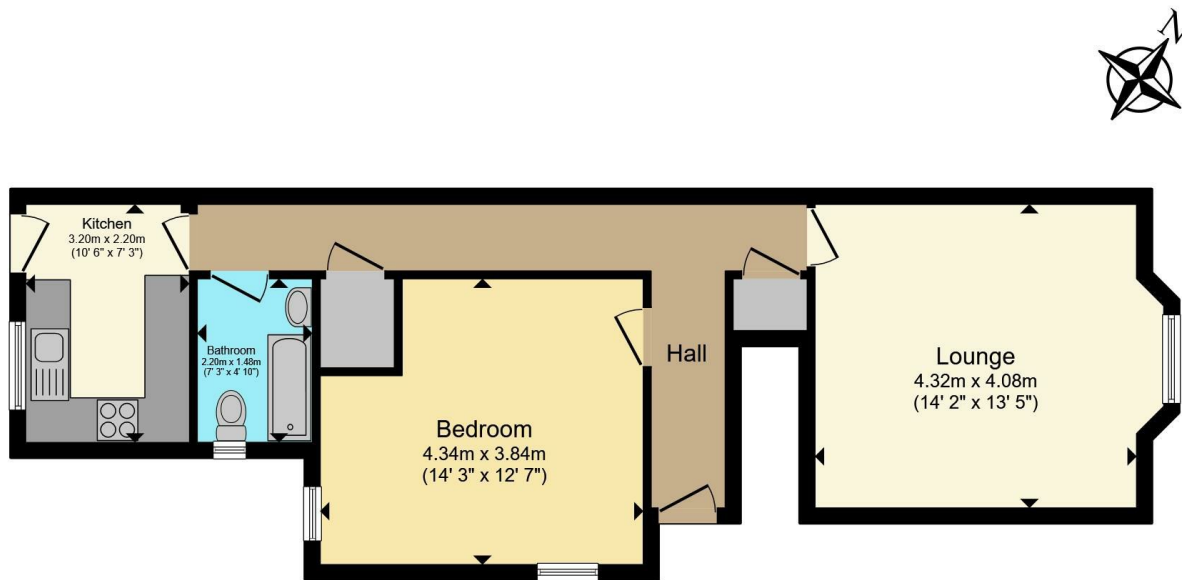




23A GEDLING GROVE
NOTTINGHAM, NG7 4DU

£950 PER MONTH

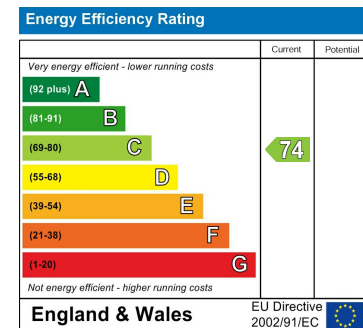
Yes Lets



Total floor area 58.4 sq.m. (629 sq.ft.) approx

This floor plan is for illustrative purposes only. It is not drawn to scale. Any measurements, floor areas (including any total floor area), openings and orientation are approximate. No details are guaranteed, they cannot be relied upon for any purpose and they do not form part of any agreement. No liability is taken for any error, omission or misstatement. A party must rely upon its own inspection(s). Powered by www.localagent.com

EPC Rating: C **Council Tax Band: A**



Agents Note: Whilst every care has been taken to prepare these particulars, they are for guidance purposes only. All measurements are approximate and are for general guidance purposes only and whilst every care has been taken to ensure their accuracy, they should not be relied upon and potential buyers/tenants are advised to recheck the measurements

Nottingham
10 Milton Court
Ravenshead
Nottingham
NG15 9BE

01157 722763
hello@yeslets.org.uk

