



HOMES BY VICTORIA  
ESTATE AGENCY

313E Evesham Road, Redditch, Worcestershire, B97 5HL

Offers Over £155,000

🛏 2 🚿 1 🚗 1



**\*\*STUNNING THIRD FLOOR APARTMENT | SOUGHT-AFTER HEADLESS CROSS LOCATION\*\*** This immaculate and beautifully presented two-bedroom apartment is located in the highly desirable area of Headless Cross, offering effortless access to local amenities, the Kingfisher Shopping Centre, and excellent transport links. Perfect for first-time buyers and young professionals, this is a true turn-key home—simply unpack and enjoy.

homesbyvictoria.co.uk

victoria@homesbyvictoria | 07833 136521

FOR M HOMES MIDLANDS LIMITED trading as Homes By Victoria Company Number: 13688840 VAT no: 470190115



HOMES BY VICTORIA  
ESTATE AGENCY



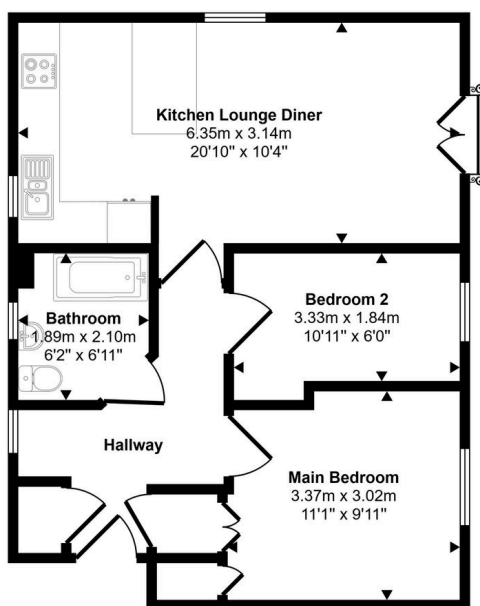
## HOMES BY VICTORIA

ESTATE AGENCY

### Key Features

- HIGHLY DESIRABLE AREA OF HEADLESS CROSS
- TWO BEDROOM APARTMENT
- RE-FITTED KITCHEN
- ALLOCTAED PARKING
- IMMACULATE AND MOVE IN READY
- MODERN OPEN PLAN LIVING
- AMPLE STORAGE
- ECONOMY 7 ELECTRIC HEATING AND DOUBLE GLAZED

Approx Gross Internal Area  
52 sq m / 555 sq ft



Floorplan

This floorplan is only for illustrative purposes and is not to scale. Measurements of rooms, doors, windows, and any items are approximate and no responsibility is taken for any error, omission or mis-statement. Icons of items such as bathroom suites are representations only and may not look like the real items. Made with Made Snappy 360.

