



HOMES BY VICTORIA
ESTATE AGENCY

Feckenham Road, Headless Cross, Redditch, B97 5AG

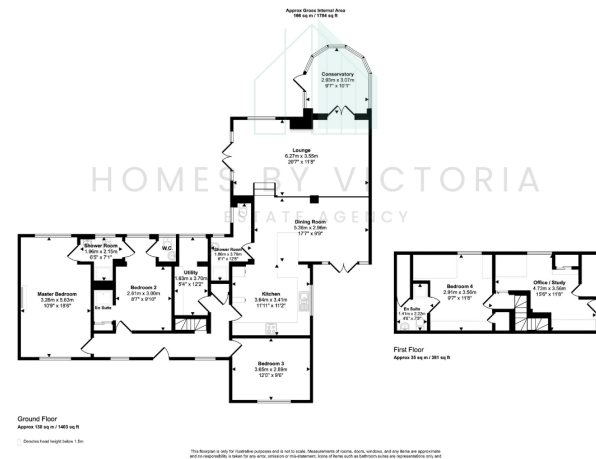
Offers Over £460,000

4 3 1



- OFFERED TO THE MARKET CHAIN FREE
- DETACHED DORMER BUNGALOW
- FEATURE LOG BURNER HOUSED WITHIN BEAUTIFUL BRICK SURROUND
- FOUR BEDROOMS
- GENEROUS BLOCK PAVED DRIVEWAY
- EXTREMELY SOUGHT AFTER LOCATION
- VERSITILE OPEN PLAN LIVING SPACE
- CONSERVATORY
- MASTER BEDROOM WITH EN-SUITE
- PRIVATE AND LANDSCAPED REAR GARDEN





An aerial photograph of a building with a prominent red-tiled roof. The building has a complex, multi-gabled structure. To the right of the building is a green lawn area. The building is situated on a street corner, with a road and other buildings visible in the background. The image is oriented vertically, with the building's main facade facing the top of the frame.



HOMES BY VICTORIA
ESTATE AGENCY