



HOMES BY VICTORIA
ESTATE AGENCY

Minworth Close, Redditch, B97 4LW

Offers Over £220,000

🛏 2 🚿 1 🚗 2



Stylish & Flexible 2/3 Bedroom Split-Level Home | Two Parking Spaces | Sought-After Webheath. Perfect for first-time buyers looking for something a little different, this impressive and beautifully upgraded split-level home offers stylish interiors, flexible living space and a peaceful setting in the highly desirable area of Webheath. Arranged over three well-planned floors, the property combines modern design with practical living, making it ideal for growing professionals, couples or those working from home.

homesbyvictoria.co.uk

victoria@homesbyvictoria | 07833 136521

FOR M HOMES MIDLANDS LIMITED trading as Homes By Victoria Company Number: 13688840 VAT no: 470190115



HOMES BY VICTORIA
ESTATE AGENCY



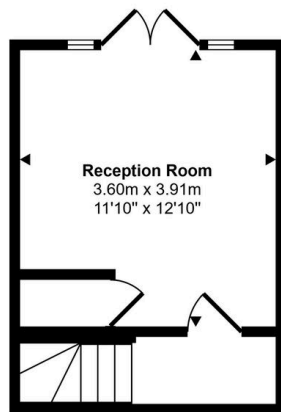
HOMES BY VICTORIA

ESTATE AGENCY

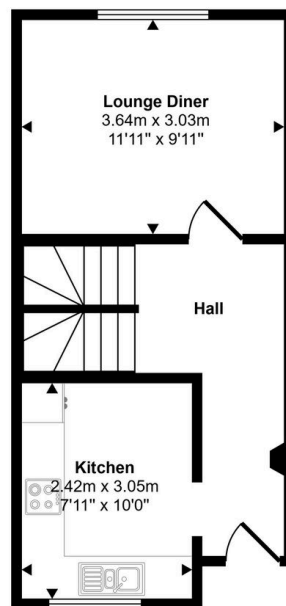
Key Features

- STYLISH SPLIT LEVEL LIVING
- MODERN FITTED KITCHEN
- MODERN FAMILY BATHROOM
- ENCLOSED REAR GARDEN
- DOUBLE GLAZED & GAS CENTRAL HEATING
- SOUGHT AFTER LOCATION OF WEBHEATH
- TWO OR THREE BEDROOMS VERSATILE LIVING
- SECOND RECEPTION ROOM
- DRIVEWAY & TWO ALLOCATED PARKING SPACES
- COUNCIL TAX BAND C & EPC C

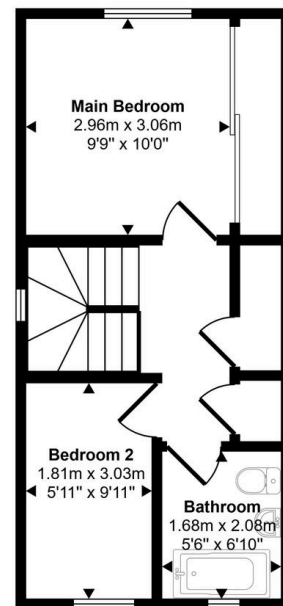
Approx Gross Internal Area
77 sq m / 834 sq ft



Lower Ground Floor
Approx 18 sq m / 195 sq ft



Ground Floor
Approx 29 sq m / 316 sq ft



First Floor
Approx 30 sq m / 323 sq ft

This floorplan is only for illustrative purposes and is not to scale. Measurements of rooms, doors, windows, and any items are approximate and no responsibility is taken for any error, omission or mis-statement. Icons of items such as bathroom suites are representations only and may not look like the real items. Made with Made Snappy 360.