



HOMES BY VICTORIA
ESTATE AGENCY

Blackstich Lane, Webheath, Redditch, B97 5TE

Offers Over £650,000

🛏 5 🚿 4 🚗 2



A Truly Exceptional Five-Bedroom Detached Home in the Heart of Webheath - Prepare to be impressed from the moment you step inside this outstanding, one-of-a-kind five-bedroom detached family home, perfectly positioned in the highly sought-after area of Webheath. This remarkable property has been comprehensively renovated from top to bottom by the current owners to an exceptional standard, creating a stylish, contemporary home that is ready to move straight into.

homesbyvictoria.co.uk

victoria@homesbyvictoria | 07833 136521

FOR M HOMES MIDLANDS LIMITED trading as Homes By Victoria Company Number: 13688840 VAT no: 470190115



HOMES BY VICTORIA
ESTATE AGENCY

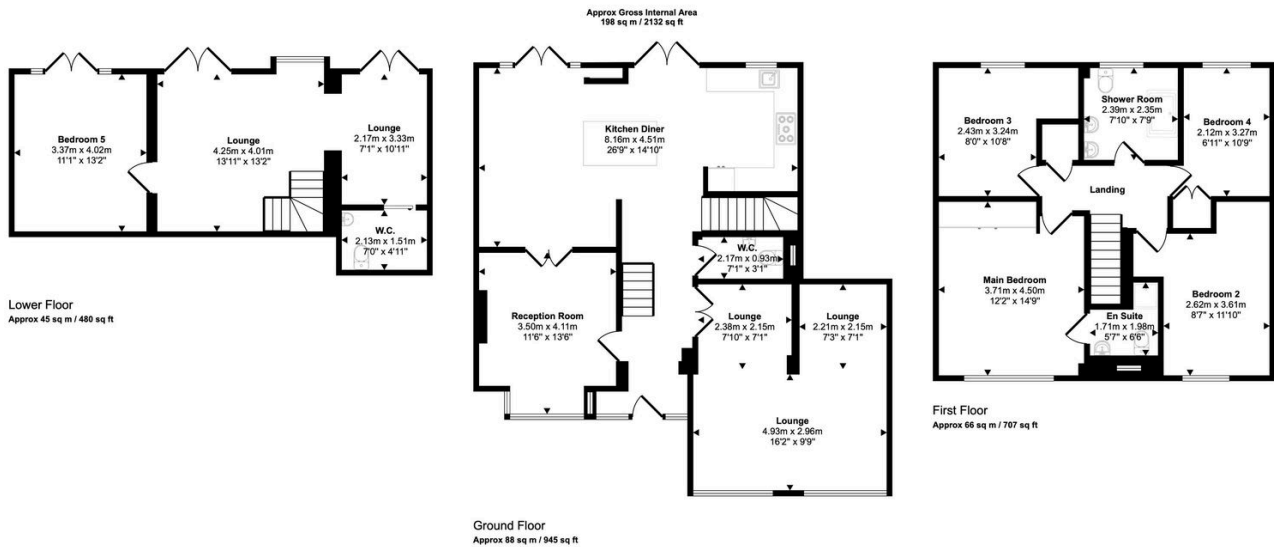


HOMES BY VICTORIA

ESTATE AGENCY

Key Features

- LOOKING FOR THE WOW FACTOR?
- LARGE FAMILY HOME OVER THREE LEVELS
- LOUNGE AND FAMILY ROOM
- FOUR BATHROOMS
- OFF ROAD PARKING
- LOCATED IN THE SOUGHT AFTER AREA OF WEBHEATH
- STUNNING KITCHEN DINER
- FIVE BEDROOMS
- LARGE SOUTH/EAST FACING LANDSCAPED REAR GARDEN
- DOUBLE GLAZED AND GAS CENTRAL HEATED THROUGHOUT



This floorplan is only for illustrative purposes and is not to scale. Measurements of rooms, doors, windows, and any items are approximate and no responsibility is taken for any error, omission or mis-statement. Icons of items such as bathrooms suites are representations only and may not look like the real items. Made with Made Snappy 360.