



HOMES BY VICTORIA
ESTATE AGENCY

Norbury Close, Redditch, B98 8RP

Offers Over £450,000

🛏 4 🚗 2 🛋 2



Executive Family Living in a Prestigious Location. Welcome to this stunning four-bedroom executive detached home, perfectly positioned on the highly sought-after Norbury Close in the desirable Church Hill North area. Offering spacious and versatile split-level living, this TARDIS-like property delivers exceptional comfort, character, and kerb appeal in equal measure.

homesbyvictoria.co.uk

victoria@homesbyvictoria | 07833 136521

FOR M HOMES MIDLANDS LIMITED trading as Homes By Victoria Company Number: 13688840 VAT no: 470190115



HOMES BY VICTORIA
ESTATE AGENCY



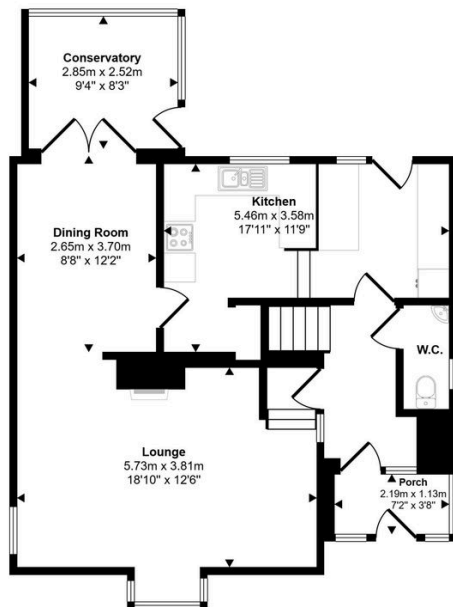
HOMES BY VICTORIA

ESTATE AGENCY

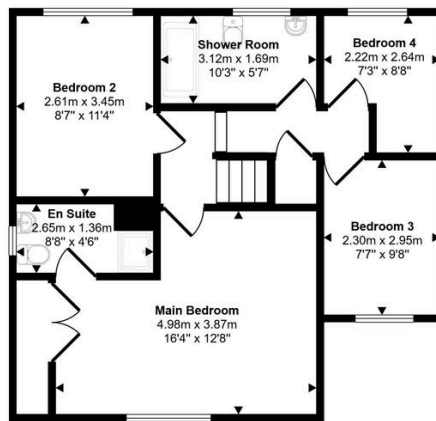
Key Features

- HIGHLY SOUGHT AFTER LOCATION
- EXECUTIVE DETACHED FOUR BEDROOM FAMILY HOME
- SPLIT LEVEL LIVING
- SPACIOUS LOUNGE WITH LOG BURNER
- DINING ROOM AND CONSERVATORY
- BREAKFAST KITCHEN
- MASTER BEDROOM WITH EN-SUITE
- DOUBLE GARAGE AND GENEROUS DRIVEWAY
- PRIVATE REAR GARDEN WITH SUMMER HOUSE
- DOUBLE GLAZING & GAS CENTRAL HEATING

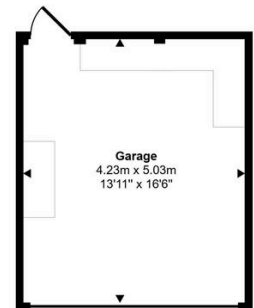
Approx Gross Internal Area
150 sq m / 1616 sq ft



Ground Floor
Approx 71 sq m / 762 sq ft



First Floor
Approx 58 sq m / 625 sq ft



Garage
Approx 21 sq m / 229 sq ft

This floorplan is only for illustrative purposes and is not to scale. Measurements of rooms, doors, windows, and any items are approximate and no responsibility is taken for any error, omission or mis-statement. Icons of items such as bathroom suites are representations only and may not look like the real items. Made with Made Snappy 360.