



HOMES BY VICTORIA
ESTATE AGENCY

Farm Road, Lakeside, Redditch, B98 8LB

Offers In Region Of £200,000

3 2 1



Don't Be Fooled by the Modest Frontage – Step Inside a Hidden Gem Full of Surprises! Welcome to Farm Road, Lakeside – a sought-after location perfect for first-time buyers, young families, or savvy investors with an eye for quality. This deceptively spacious and beautifully renovated home has been lovingly transformed into a contemporary haven that blends style, comfort, and practicality in every corner.

homesbyvictoria.co.uk

victoria@homesbyvictoria | 07833 136521

FOR M HOMES MIDLANDS LIMITED trading as Homes By Victoria Company Number: 13688840 VAT no: 470190115

ico.

The Property
Ombudsman



HOMES BY VICTORIA
ESTATE AGENCY



HOMES BY VICTORIA

ESTATE AGENCY


Key Features

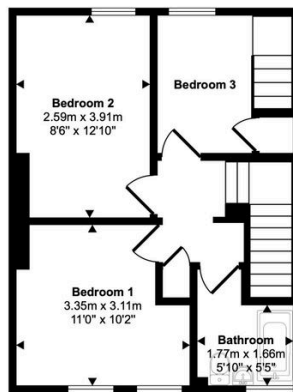
- POPULAR LOCATION OF LAKESIDE, REDDITCH
- A TRUE TARDIS OF A HOME
- GENEROUS LOUNGE WITH LOG BURNER
- SLEEK AND MODERN KITCHEN WITH INTEGRATED APPLIANCES
- DOUBLE GLAZED AND BI-FOLD PATIO DOOR
- THREE BEDROOMS
- CONVERTED LOFT SPACE WITH EN-SUITE
- STUNNING REAR GARDEN AND OUTSIDE WC
- FULLY FUNCTIONING WORKSHOP
- OFF ROAD PARKING

Approx Gross Internal Area
113 sq m / 1219 sq ft

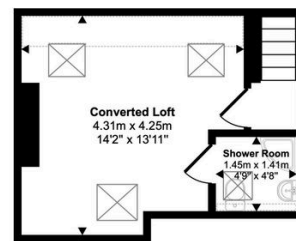


Ground Floor
Approx 42 sq m / 455 sq ft

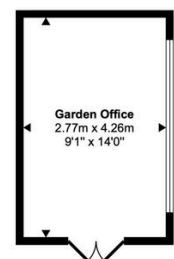
 Denotes head height below 1.5m



First Floor
Approx 38 sq m / 410 sq ft



Second Floor
Approx 21 sq m / 227 sq ft



Reception Room
Approx 12 sq m / 127 sq ft

This floorplan is only for illustrative purposes and is not to scale. Measurements of rooms, doors, windows, and any items are approximate and no responsibility is taken for any error, omission or mis-statement. Icons of items such as bathroom suites are representations only and may not look like the real items. Made with Made Snappy 360.