



HOMES BY VICTORIA
ESTATE AGENCY

Scott Road, Redditch, B97 5BW

Offers Over £465,000

🛏 4 🚿 3 🛋 2



- **Striking, Stylish & Spacious – A Rare Find in Headless Cross** - Welcome to this fully refurbished 3/4 bedroom detached dormer bungalow, perfectly positioned in the sought-after Headless Cross area of Redditch. Offering a seamless blend of contemporary design, versatile living space, and exceptional natural light, this property is a dream home for growing families or professionals seeking flexible and modern accommodation.

homesbyvictoria.co.uk

victoria@homesbyvictoria | 07833 136521

FOR M HOMES MIDLANDS LIMITED trading as Homes By Victoria Company Number: 13688840 VAT no: 470190115

ico.

The Property
Ombudsman



HOMES BY VICTORIA
ESTATE AGENCY

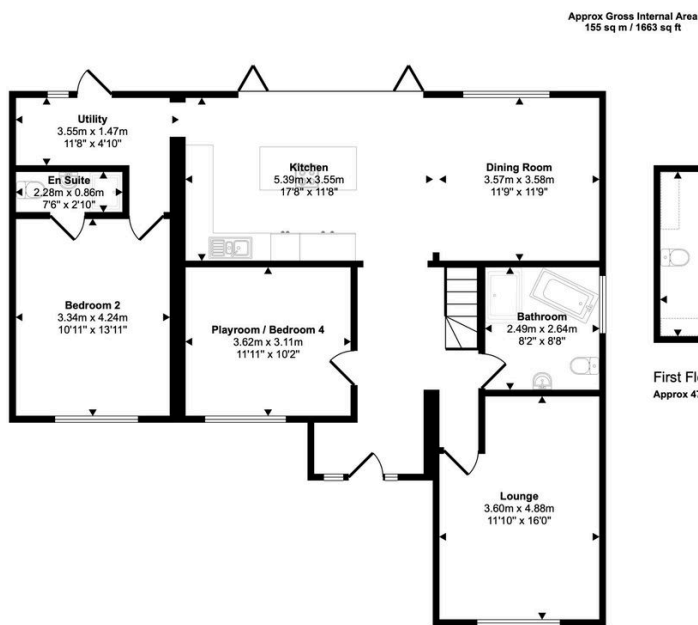


HOMES BY VICTORIA

ESTATE AGENCY

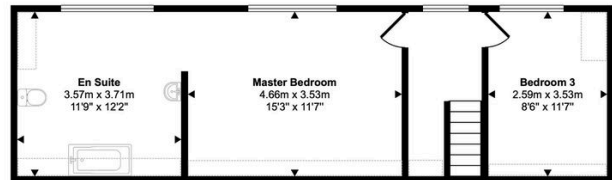
Key Features

- OFFERED TO THE MARKET CHAN FREE
- FULLY REFURBISHED 3/4 BEDROOM DORMER BUNGALOW
- OCCUPYING A GENEROUS PLOT
- OPEN PLAN MODERN LIVING
- FULLY INTEGRATED KITCHEN AND DINER/LIVING SPACE
- MASTER BEDROOM WITH LARGE ENSUITE BATHROOM
- BEDROOM TWO WITH ENSUITE SHOWER ROOM
- FAMILY BATHROOM WITH FREE STANDING BATH
- GENEROUS SOUTH WEST FACING REAR GARDEN
- OFF ROAD PARKING FOR MULTIPLE VEHICLES



Ground Floor
Approx 108 sq m / 1162 sq ft

Denotes head height below 1.5m



First Floor
Approx 47 sq m / 501 sq ft

This floorplan is only for illustrative purposes and is not to scale. Measurements of rooms, doors, windows, and any items are approximate and no responsibility is taken for any error, omission or mis-statement. Icons of items such as bathroom suites are representations only and may not look like the real items. Made with Made Snappy 360.