

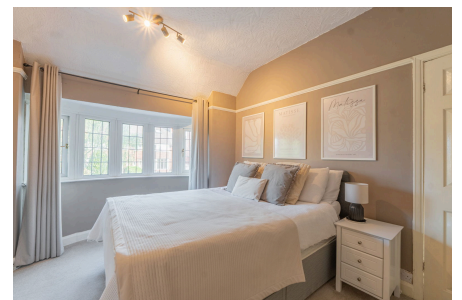


HOMES BY VICTORIA  
ESTATE AGENCY

22 Oakenshaw Road,

Offers Over £255,000

3 1 2



**Stylish, Spacious & Full of Surprises – Your Ideal First Home Awaits on Oakenshaw Road!** Step inside this beautifully updated three-bedroom home on sought-after Oakenshaw Road, nestled in the heart of Greenlands – a favorite spot for first-time buyers and young families alike.

homesbyvictoria.co.uk

victoria@homesbyvictoria | 07833 136521

FOR M HOMES MIDLANDS LIMITED trading as Homes By Victoria Company Number: 13688840 VAT no: 470190115



HOMES BY VICTORIA  
ESTATE AGENCY

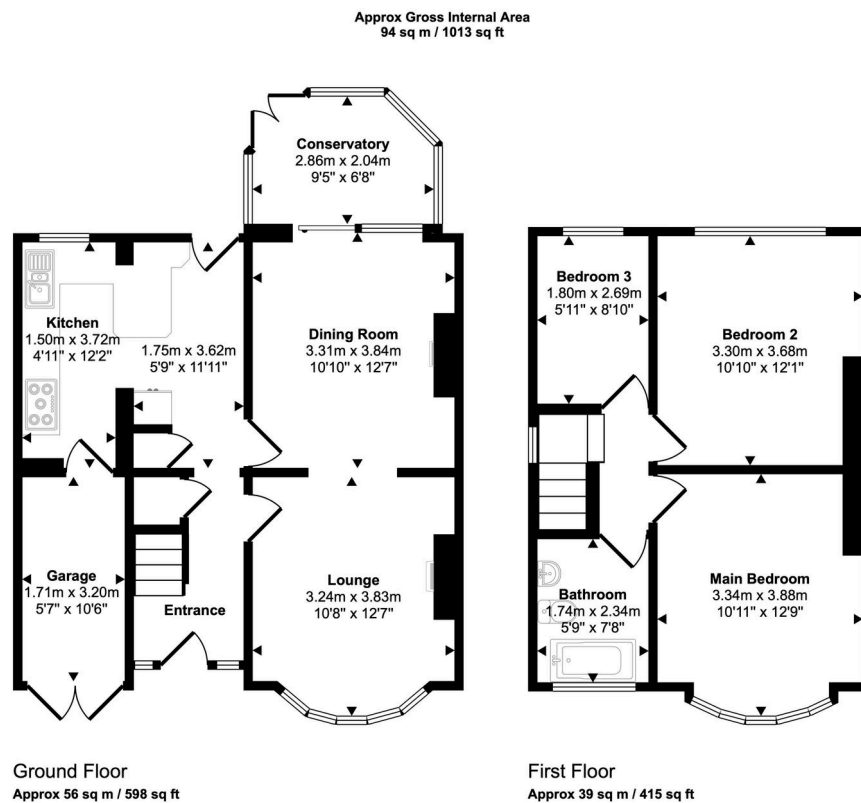


## HOMES BY VICTORIA

ESTATE AGENCY

### Key Features

- BEAUTIFUL TWIST OF TRADITIONAL & MODERN
- SEMI-DETACHED HOME
- LOUNGE THROUGH DINER
- THREE BEDROOMS
- ENCLOSED PRIVATE REAR GARDEN
- LOCATED IN THE POPULAR AREA OF GREENLANDS
- BREAKFAST KITCHEN
- CONSERVATORY
- MODERN FAMILY BATHROOM
- BLOCKPAVED DRIVEWAY AND STORAGE GARAGE



This floorplan is only for illustrative purposes and is not to scale. Measurements of rooms, doors, windows, and any items are approximate and no responsibility is taken for any error, omission or mis-statement. Icons of items such as bathroom suites are representations only and may not look like the real items. Made with Made Snappy 360.