



HOMES BY VICTORIA
ESTATE AGENCY

Dene Cottage, Earls Common, Droitwich, WR9 7LB

Offers Over £675,000

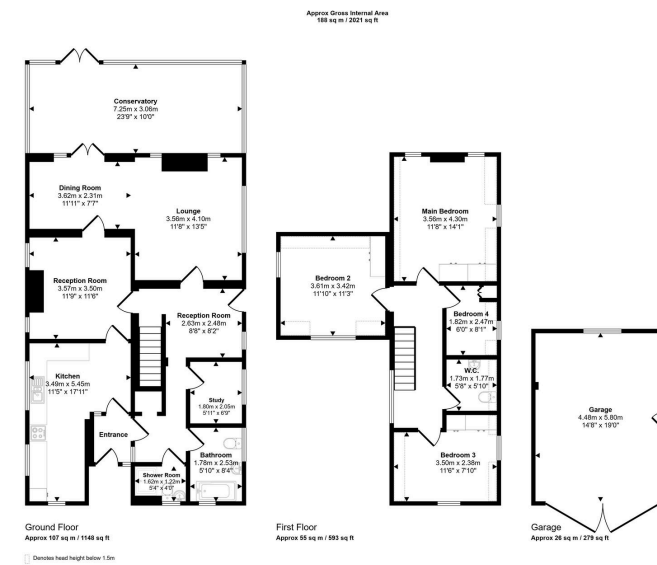
🛏 4 🚿 2 🛋 2

- Charming Detached Country Cottage
- Offers Character & Warmth
- Spacious Conservatory
- Potential for Modernisation
- An additional 0.7 acre paddock available for purchase via separate negotiation
- Idyllic Rural Setting
- Versatile Living Space
- Four Bedrooms
- Detached Garage & Outbuildings
- Strong Transport Links



A Hidden Countryside Gem, Full of Character, Charm & Plenty of Potential - Set within the peaceful hamlet of Earls Common, this delightful south-facing detached country cottage offers the very best of rural living, combining timeless charm with space, privacy, and panoramic countryside views. Nestled within approximately 0.65 of an acre of beautifully kept gardens (*offering an additional 0.7 of an acre grounds, woodland and a wildflower paddock offered as a separate negotiation*), this property is a rare opportunity to embrace an idyllic country lifestyle while remaining within easy reach of amenities, transport links, and highly regarded schools.





homesbyvictoria.co.uk
victoria@homesbyvictoria | 07833 136521

FOR M HOMES MIDLANDS LIMITED trading as Homes By Victoria Company Number: 13688840 VAT no: 470190115



HOMES BY VICTORIA
ESTATE AGENCY