



HOMES BY VICTORIA
ESTATE AGENCY

Oakham Close, Oakenshaw South, Redditch, B98 7YQ

Offers Over £310,000

3 2 2



Beautifully Presented Detached Family Home in Desirable Oakenshaw South

Nestled in the sought-after residential enclave of Oakenshaw South, this well maintained three-bedroom detached home offers the perfect blend of comfort, space, and convenience. With its well-balanced layout, stylish interiors, and delightful low maintenance garden, this property presents a rare opportunity to acquire a home of quality in a peaceful, well-connected community.

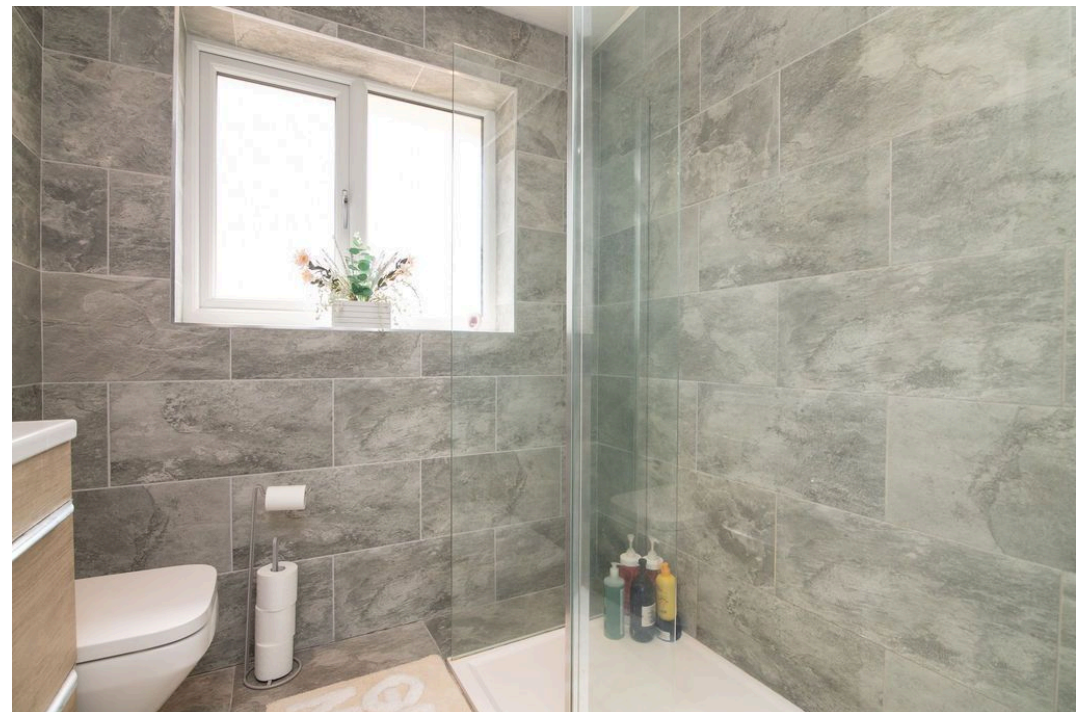
From the moment you step through the inviting entrance hallway, the sense of warmth and care is evident. The ground floor boasts a spacious lounge that seamlessly flows into a bright and airy dining area, ideal for both everyday living and entertaining. At the heart of the home lies a beautifully appointed kitchen, featuring an array of wall and base units, built-in storage, and high-spec integrated appliances. A separate utility room offers additional functionality with access to both the rear garden and garage. There is also a downstairs wc for convenience.

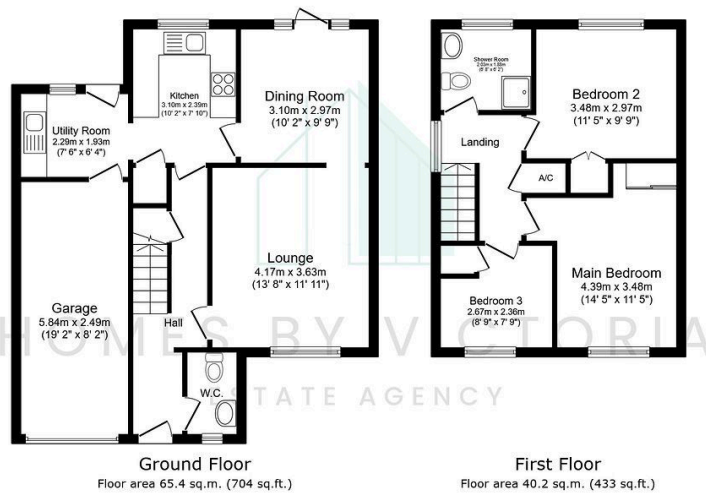
Upstairs, the first-floor landing benefits from built-in storage and leads to three well-proportioned bedrooms. The master bedroom is a generous double with recess space for wardrobe, bedroom two another good sized double offers built in storage and a bedroom three a single bedroom with built in storage. The family shower room is modern and contemporary offering walk shower, low level wc and wash basin.

The rear garden has been thoughtfully landscaped and tiered for ease of maintenance and year-round enjoyment. Artificial grass offers that pop of colour to the gravelled and paved areas, all enclosed by timber fencing and brick walls to ensure privacy. This charming garden provides the perfect spot to unwind and has side gated access for convenience.

Completing the property is a single garage with up and over door to the front, and a generous tarmac driveway.

Oakenshaw South is a tranquil and well-established neighbourhood within Redditch, known for its family-friendly atmosphere and





Total floor area: 105.7 sq.m. (1,137 sq.ft.)

This floor plan is for illustrative purposes only. It is not drawn to scale. Any measurements, floor areas (including any total floor area), openings and orientations are approximate. No details are guaranteed, they cannot be relied upon for any purpose and do not form any part of any agreement. No liability is taken for any error, omission or misstatement. A party must rely upon its own inspection(s).

- SOUGHT AFTER LOCATION OF OAKENSHAW SOUTH
- TWO RECEPTION ROOMS
- DOWNSTAIRS WC
- MODERN SHOWER ROOM
- GARAGE AND DRIVEWAY
- DETACHED FAMILY HOME
- FITTED KITCHEN AND UTILITY
- THREE BEDROOMS
- LOW MAINTENANCE REAR GARDEN
- EPC RATING C & COUNCIL TAX BAND



homesbyvictoria.co.uk
victoria@homesbyvictoria | 07833 136521

FOR M HOMES MIDLANDS LIMITED trading as Homes By Victoria Company Number: 13688840 VAT no: 470190115



HOMES BY VICTORIA
ESTATE AGENCY