



HOMES BY VICTORIA
ESTATE AGENCY

Hoveton Close, Greenlands, Redditch, B98 7HW

Offers Over £280,000

3 2 2



- MODERN AND STYLISH THROUGHOUT
- STUNNING BREAKFAST KITCHEN
- LARGE CONSERVATORY
- WRAP AROUND PRIVATE REAR GARDEN
- DOUBLE GLAZED AND GAS CENTRAL HEATED
- THREE BEDROOM SEMI-DETACHED HOME
- GENEROUS LOUNGE DINER
- FAMILY BATHROOM
- OFF ROAD PAKING FOR TWO VEHICLES
- A MUST SEE HOME TO FULLY APPRECIATE WHAT IS ON OFFER

homesbyvictoria.co.uk

victoria@homesbyvictoria | 07833 136521

FOR M HOMES MIDLANDS LIMITED trading as Homes By Victoria Company Number: 13688840 VAT no: 470190115



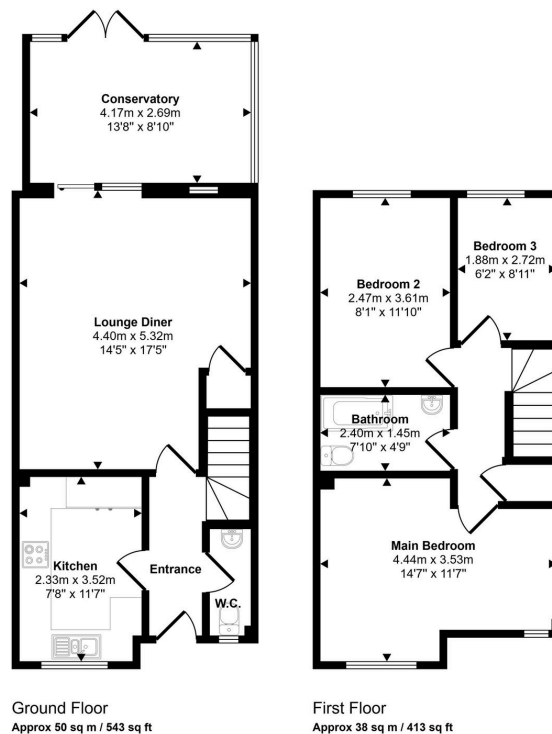
HOMES BY VICTORIA
ESTATE AGENCY



HOMES BY VICTORIA
ESTATE AGENCY



Approx Gross Internal Area
89 sq m / 956 sq ft



This floorplan is only for illustrative purposes and is not to scale. Measurements of rooms, doors, windows, and any items are approximate and no responsibility is taken for any error, omission or mis-statement. Icons of items such as bathroom suites are representations only and may not look like the real items. Made with Made Snappy 360.

Modern Comfort Meets Spacious Living - Welcome to this stylishly updated, three-bedroom semi-detached home, set on an enviable corner plot in the popular area of Greenlands, Redditch. Immaculately presented and thoughtfully upgraded, this property offers modern living at its best, ideal for families, professionals, or anyone looking to move straight in with zero hassle.

homesbyvictoria.co.uk
victoria@homesbyvictoria | 07833 136521

FOR M HOMES MIDLANDS LIMITED trading as Homes By Victoria Company Number: 13688840 VAT no: 470190115



HOMES BY VICTORIA
ESTATE AGENCY