

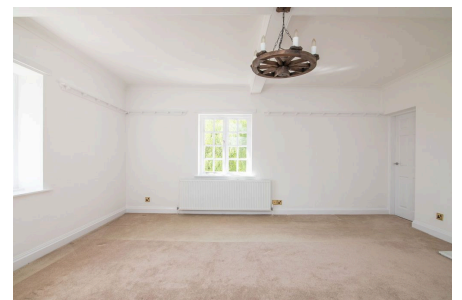


HOMES BY VICTORIA  
ESTATE AGENCY

## Flat 5, Beadesert Park, Birmingham Road, Henley-in-Arden, B95 5QB

Offers In Region Of £425,000

🛏 2 🍷 2 🛋 2



**A Characterful Countryside Retreat in the Heart of Henley-in-Arden – Offered with No Upward Chain.** Tucked away within beautifully maintained parkland and enjoying elevated countryside views, this elegant two-bedroom top-floor apartment forms part of a distinguished period building dating back to the 1850s. Formerly a grand residence, the property has been thoughtfully converted into a small collection of apartments, preserving its original charm and character.

[homesbyvictoria.co.uk](https://www.homesbyvictoria.co.uk)

[victoria@homesbyvictoria](mailto:victoria@homesbyvictoria) | 07833 136521

FOR M HOMES MIDLANDS LIMITED trading as Homes By Victoria Company Number: 13688840 VAT no: 470190115

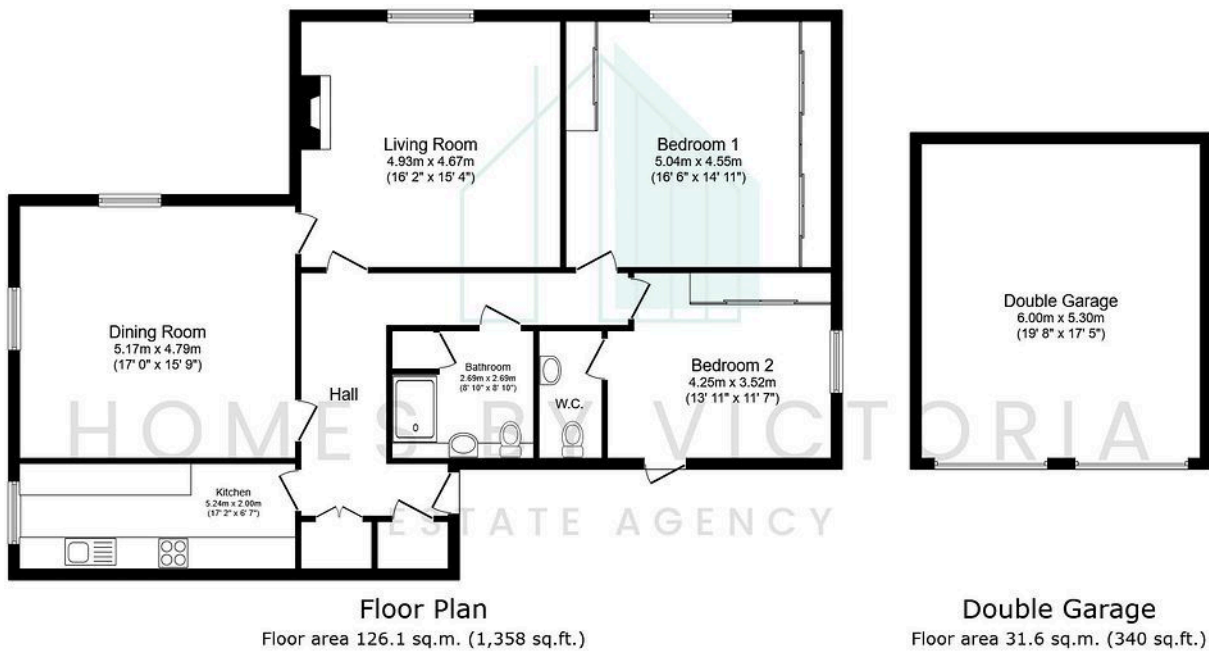


HOMES BY VICTORIA  
ESTATE AGENCY



## Key Features

- Top floor apartment in a grand period building
- Dual-aspect dining room & character-rich sitting room
- En-suite WC to guest room
- Beautiful communal grounds
- No upward chain
- Two spacious bedrooms with countryside views
- Galley kitchen with breakfast bar
- Ample storage & original period features
- Private double garage en bloc
- Walking distance to Henley High Street



Total floor area: 157.8 sq.m. (1,698 sq.ft.)

This floor plan is for illustrative purposes only. It is not drawn to scale. Any measurements, floor areas (including any total floor area), openings and orientations are approximate. No details are guaranteed, they cannot be relied upon for any purpose and do not form any part of any agreement. No liability is taken for any error, omission or misstatement. A party must rely upon its own inspection(s).