



HOMES BY VICTORIA
ESTATE AGENCY

Barford Close, Matchborough East, Redditch, B98 0BA

Offers Over £270,000

3 1 2



homesbyvictoria.co.uk
victoria@homesbyvictoria | 07833 136521

FOR M HOMES MIDLANDS LIMITED trading as Homes By Victoria Company Number: 13688840 VAT no: 470190115



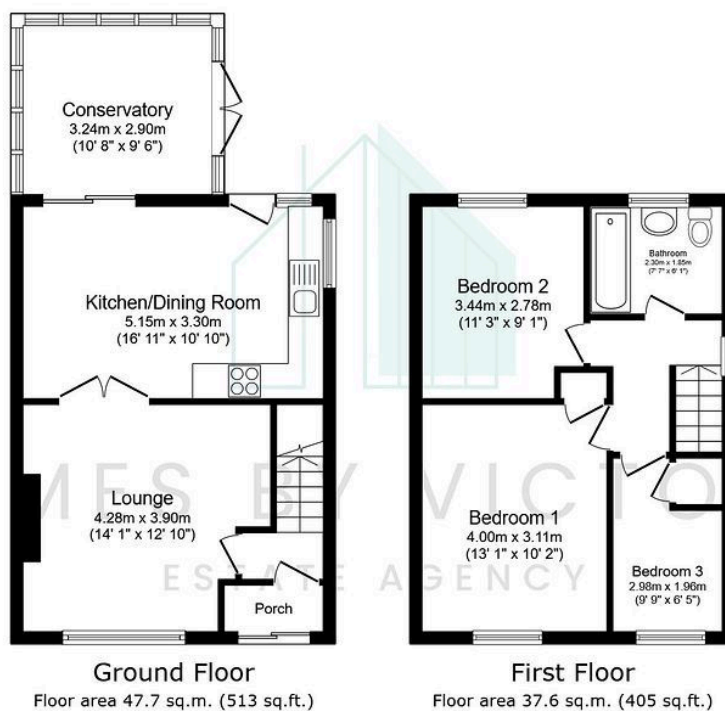
HOMES BY VICTORIA
ESTATE AGENCY



HOMES BY VICTORIA

ESTATE AGENCY

- WELL PRESENTED SEMI-DETACHED PROPERTY
- SPACIOUS LOUNGE
- GENEROUS SIZED CONSERVATORY
- FAMILY BATHROOM
- BLOCK PAVED DRIVWEAY
- POPULAR RESIDENTIAL LOCATION
- KITCHEN DINER
- THREE BEDROOMS
- BEAUTIFUL REAR GARDEN
- COUNCIL TAX BAND AND EPC RATING 'C'



Total floor area: 85.2 sq.m. (918 sq.ft.)

This floor plan is for illustrative purposes only. It is not drawn to scale. Any measurements, floor areas (including any total floor area), openings and orientations are approximate. No details are guaranteed, they cannot be relied upon for any purpose and do not form any part of any agreement. No liability is taken for any error, omission or misstatement. A party must rely upon its own inspection(s).

Nestled in the sought-after area of Matchborough East, this beautifully presented three-bedroom semi-detached home is ready for its next owners. This move-in ready home is a fantastic opportunity for families, first-time buyers, or those looking to upsize