

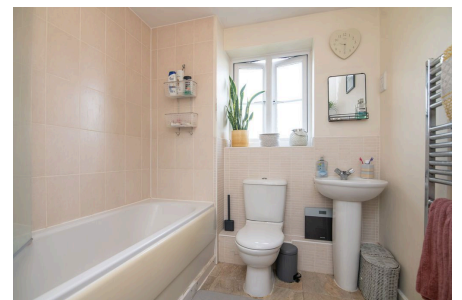
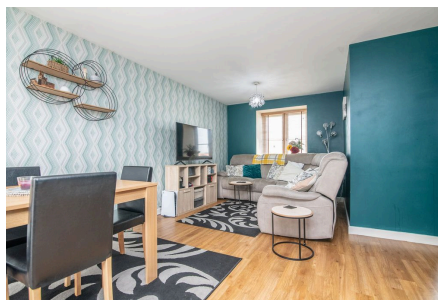


HOMES BY VICTORIA
ESTATE AGENCY

Hollington House, Dixon Close, Redditch, B97 6AJ

Offers Over £130,000

🛏 2 🚿 1 🛋 1



****Stylish & Well-Presented Two-Bedroom Apartment in Prime Redditch Location**** Nestled within beautifully maintained grounds, this stylish and well-presented two-bedroom apartment offers an exceptional living experience. Positioned on the top floor, the property benefits from a secure intercom entry system, with stair access to all floors, and the added convenience of allocated parking **OFFERED TO THE MARKET CHAIN FREE!**

homesbyvictoria.co.uk

victoria@homesbyvictoria | 07833 136521

FOR M HOMES MIDLANDS LIMITED trading as Homes By Victoria Company Number: 13688840 VAT no: 470190115



HOMES BY VICTORIA
ESTATE AGENCY

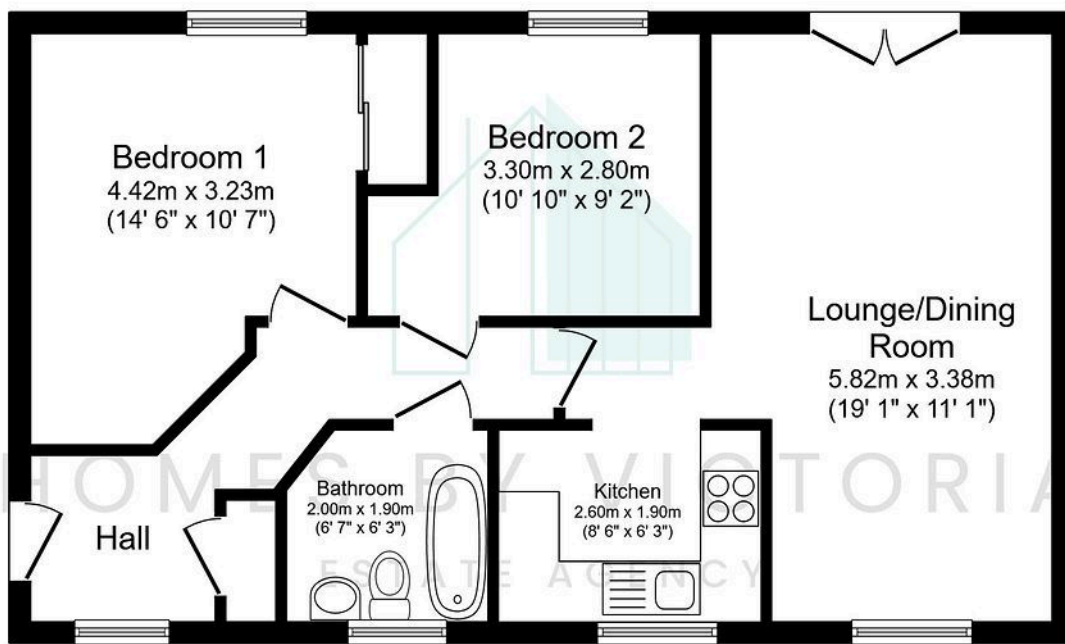


HOMES BY VICTORIA

ESTATE AGENCY

Key Features

- OFFERED TO THE MARKET CHAIN FREE
- TOP FLOOR APARTMENT
- LOUNGE/DINER WITH JULIET-STYLE BALCONY
- FITTED KITCHEN
- MASTER BEDROOM WITH BUILT IN WARDROBES
- GENEROUS SECOND BEDROOM
- MODERN BATHROOM
- GAS CENTRAL HEATING
- ALLOCATED PARKING SPACE
- LONG LEASE



Floor Plan

Floor area 58.8 m² (633 sq.ft.)

TOTAL: 58.8 m² (633 sq.ft.)

This floor plan is for illustrative purposes only. It is not drawn to scale. Any measurements, floor areas (including any total floor area), openings and orientations are approximate. No details are guaranteed, they cannot be relied upon for any purpose and do not form any part of any agreement. No liability is taken for any error, omission or misstatement. A party must rely upon its own inspection(s).