






HOMES BY VICTORIA  
ESTATE AGENCY



**Morville Street, Webheath, Redditch, B97 5GZ**

**Offers In Region Of £380,000**

 3  2  1



**\*\*A Stunning Three-Bedroom Detached Family Home in the Heart of Webheath, Redditch\*\*** Prepare to be wowed by this immaculate three-bedroom detached family home, perfectly situated in the desirable location of Webheath, Redditch. From its striking curb appeal to its breathtaking, recently landscaped rear garden, this home is a true showstopper, exuding elegance, style, and modern sophistication at every turn.

Step inside, and you are welcomed into a bright and airy hallway, providing access to the stylish lounge, a generously sized space featuring a contemporary panelled wall and a convenient understairs storage cupboard. Moving through to the rear of the home, the stunning open-plan kitchen diner is bathed in natural light, offering an impressive selection of wall and base units, ample work surfaces, and integrated appliances, including an oven, hob, extractor, and dishwasher. This inviting space is perfect for both family meals and entertaining, with patio doors seamlessly extending the living area into the spectacular garden.

A separate utility room provides additional practicality, with direct access to the guest WC and a side entrance for added convenience.

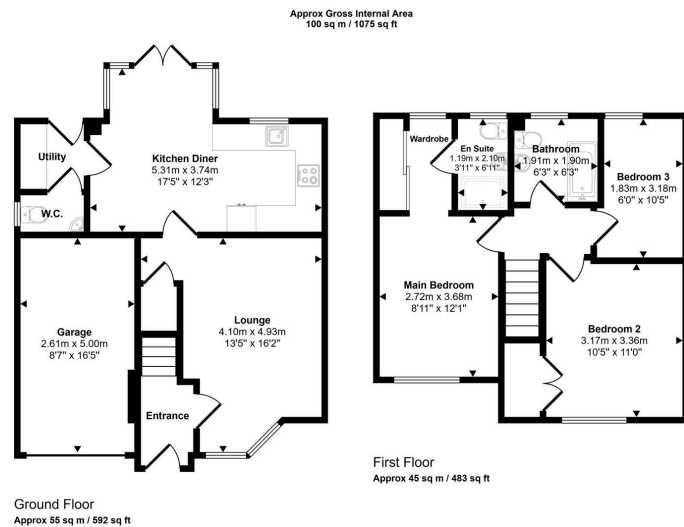
Upstairs, the luxurious master suite boasts a dedicated dressing area and a stylish ensuite shower room. Bedroom two is a spacious double with built-in wardrobes, while bedroom three is a well-proportioned single, currently used as a delightful craft room. The modern family bathroom is beautifully appointed with a three-piece suite, including a bath, pedestal basin, and low-level WC.

Now, let's talk about the incredible rear garden, a true sanctuary! Recently reimagined to create a serene outdoor retreat, this tiered masterpiece features a large porcelain-tiled patio spanning the width of the property, leading up shallow steps to two beautifully maintained lawned areas and a second tiled seating space, perfect for relaxing or entertaining. The garden is fully enclosed with fenced boundaries and benefits from an outdoor tap, electric socket, and side-gated access for ease and security.

To the front, a spacious tarmac driveway provides ample parking and leads to the single garage, complete with lighting and electrics.







This floorplan is only for illustrative purposes and is not to scale. Measurements of rooms, doors, windows, and any items are approximate and no responsibility is taken for any error, omission or mis-statement. Icons of items such as bathroom suites are representations only and may not look like the real items. Made with Made Snappy 360.

- GIVING THE WOW FACTOR
- STUNNING THREE BEDROOM DETACHED HOME
- HIGHLY DESIRABLE AREA OF WEBHEATH
- LOUNGE WITH MODERN PANELLING
- BEAUTIFUL KITCHEN DINER
- UTILITY ROOM AND DOWNSTAIRS WC
- MASTER BEDROOM WITH DRESSING AREA & EN-SUITE
- FAMILY BATHROOM
- RECENTLY REDESIGNED GARDEN
- GARAGE AND DRIVEWAY



homesbyvictoria.co.uk  
victoria@homesbyvictoria | 07833 136521

FOR M HOMES MIDLANDS LIMITED trading as Homes By Victoria Company Number: 13688840 VAT no: 470190115



HOMES BY VICTORIA  
ESTATE AGENCY