



HOMES BY VICTORIA  
ESTATE AGENCY

## Bishop Hall Crescent, Bromsgrove, B60 3JS

Offers Over £240,000

🛏 2 🚿 1 🛋 2



homesbyvictoria.co.uk  
victoria@homesbyvictoria | 07833 136521

FOR M HOMES MIDLANDS LIMITED trading as Homes By Victoria Company Number: 13688840 VAT no: 470190115



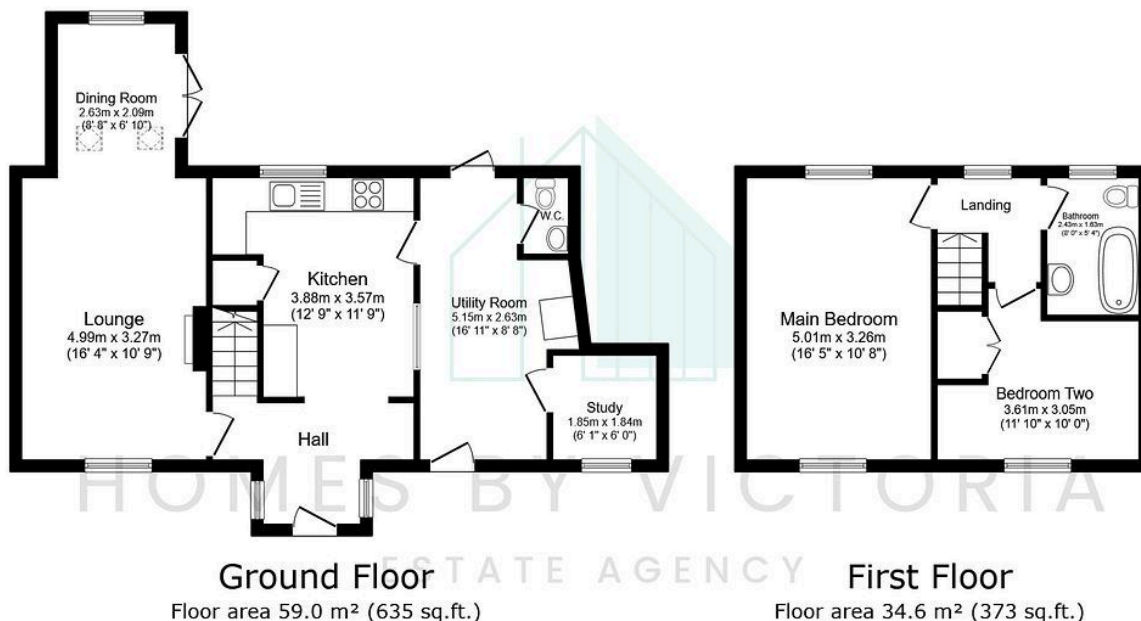
HOMES BY VICTORIA  
ESTATE AGENCY



## HOMES BY VICTORIA

ESTATE AGENCY

- CHARACTERFUL SEMI DETACHED HOME
- POPULAR LOCATION OF BROMSGROVE
- BREAKFAST KITCHEN
- SPACIOUS LOUNGE WITH LOG BURNER
- DINING AREA
- UTILITY ROOM AND DOWNSTAIRS WC
- TWO BEDROOMS
- DELIGHTFUL REAR GARDEN AND WORKSHOP
- GENEROUS GATED DRIVEWAY
- EXCELLENT SCHOOL CATCHMENT AREA



TOTAL: 93.6 m<sup>2</sup> (1,008 sq.ft.)

This floor plan is for illustrative purposes only. It is not drawn to scale. Any measurements, floor areas (including any total floor area), openings and orientations are approximate. No details are guaranteed, they cannot be relied upon for any purpose and do not form any part of any agreement. No liability is taken for any error, omission or misstatement. A party must rely upon its own inspection(s).

**Charming & Characterful Home in the Heart of Bromsgrove** - Nestled in the sought-after location of Bromsgrove, this delightful property exudes charm and curb appeal from the moment you arrive. Accessed via a gated, stoned driveway, the home welcomes you with its attractive reclaimed brick extended entrance hallway, setting the tone for the character and warmth found throughout.