



HOMES BY VICTORIA  
ESTATE AGENCY



**56 Mordiford Close**  
Offers Over £190,000

🛏 3 🍷 2 🚗 1





## Charming Three-Bedroom Home – Perfect for First-Time Buyers!

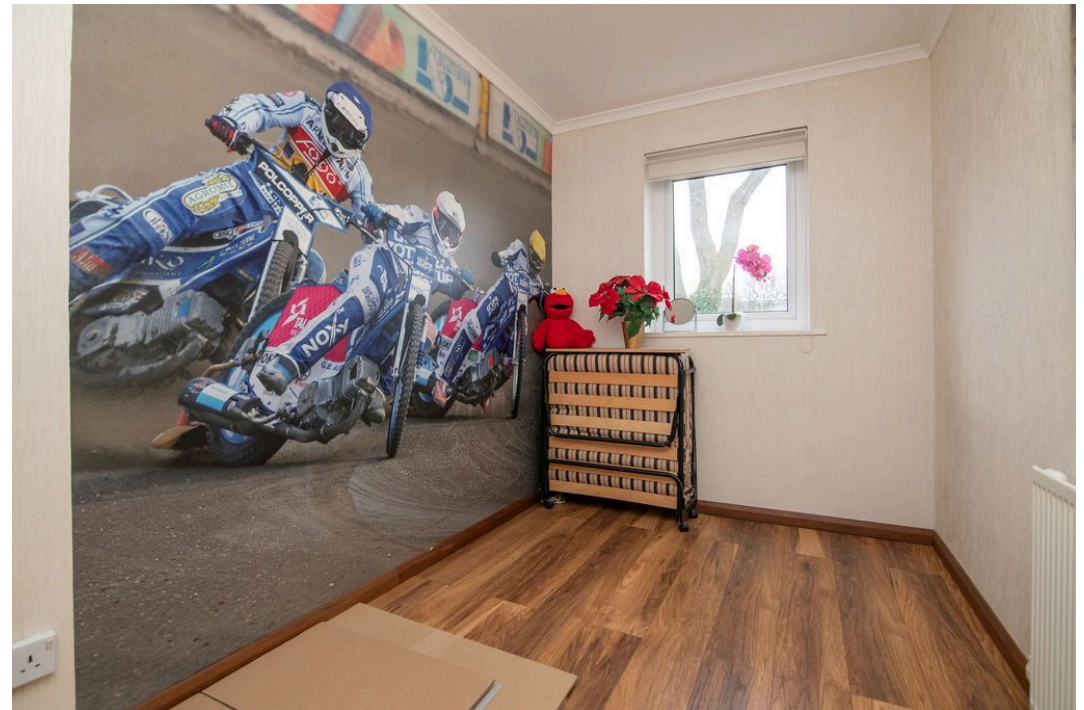
Nestled in the heart of the popular Winyates area of Redditch, this well-presented three-bedroom mid-terrace home is an ideal choice for first-time buyers or growing families. Conveniently located near well-regarded schools, local shops, and excellent public transport links, this property offers both comfort and convenience in a sought-after setting.

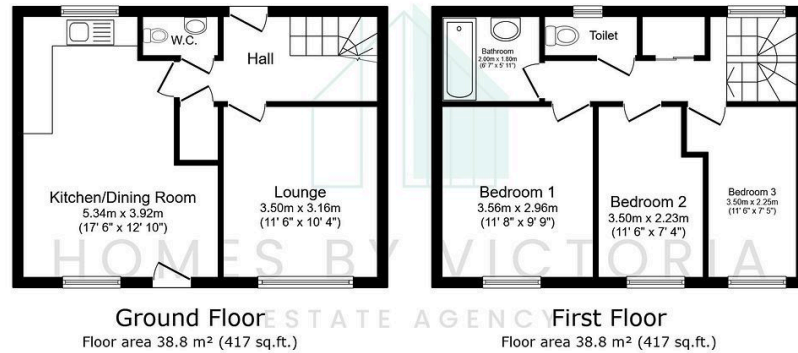
Step inside to find a welcoming entrance hallway, a handy downstairs WC, and a spacious lounge, perfect for relaxing after a long day. The generous kitchen/diner is ideal for family meals and entertaining, with patio doors opening onto the private rear garden, creating a seamless indoor-outdoor flow.

Upstairs, the property boasts three well-proportioned bedrooms, a modern family bathroom, and ample storage to keep everything neatly tucked away. Benefiting from gas central heating and double glazing, this home has been lovingly maintained by its current owners and is ready to move straight into.

Outside, the property features a gated fore garden for added privacy and a fully enclosed rear garden, mainly laid to lawn with fenced boundaries and rear gated access for convenience. Ample communal parking ensures stress-free parking for both residents and visitors.

This fantastic home won't be available for long—call now to book your viewing!





- OFFERED TO THE MARKET CHAIN FREE
- POPULAR AREA OF REDDITCH
- LOUNGE
- AMPLE STORAGE
- ENCLOSED REAR GARDEN
- IMMACULATELY PRESENTED THROUGHOUT
- SPACIOUS KITCHEN DINER
- DOWNSTAIRS WC
- THREE BEDROOMS
- COMMUNAL PARKING



homesbyvictoria.co.uk  
victoria@homesbyvictoria | 07833 136521

FOR M HOMES MIDLANDS LIMITED trading as Homes By Victoria Company Number: 13688840 VAT no: 470190115



HOMES BY VICTORIA  
ESTATE AGENCY