



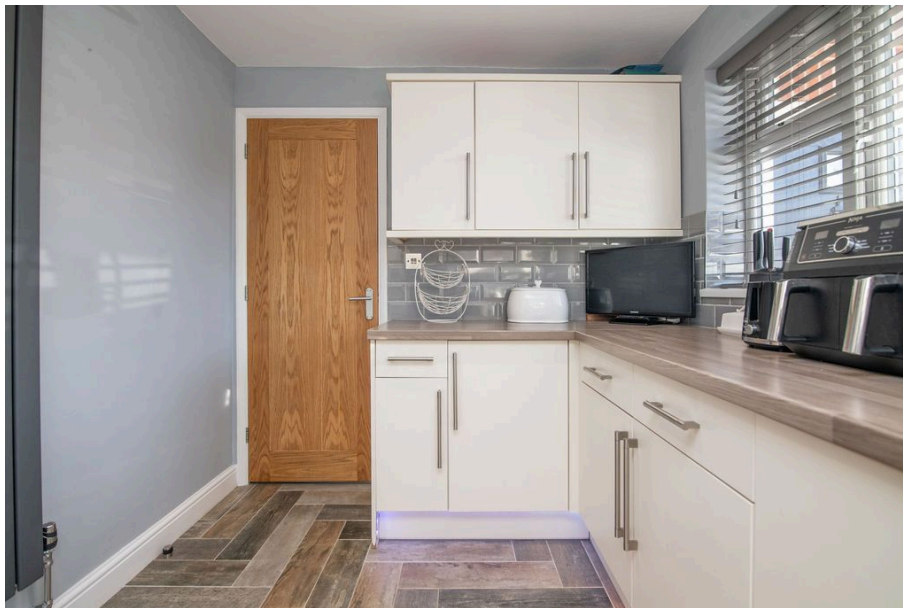
HOMES BY VICTORIA  
ESTATE AGENCY



Tidbury Close, Walkwood, Redditch B97 5LW

Offers Over £280,000

3 2 1





Nestled in the highly sought-after area of Walkwood, Redditch, this modern and stylish three-bedroom semi-detached home is the epitome of contemporary living. Impeccably presented and thoughtfully designed, it offers a wealth of desirable features both inside and out.

Upon entering, you're welcomed by a charming porch that leads into a spacious entrance hallway, complete with convenient understair storage. The lounge, with its stunning feature media wall, is a perfect blend of comfort and style, with patio doors that seamlessly open onto the garden. A separate dining room provides an ideal space for family meals or entertaining, while the modern fitted kitchen offers a sleek and functional layout. The ground floor is further enhanced by a practical downstairs WC.

Upstairs, the master bedroom impresses with its built-in wardrobes, providing ample storage. The second bedroom, a generous double, also features built-in storage, while the third bedroom is a good-sized single, complete with its own recess storage space. The family bathroom is beautifully appointed, featuring a P-shaped bath with a shower over, adding a touch of luxury to the home.

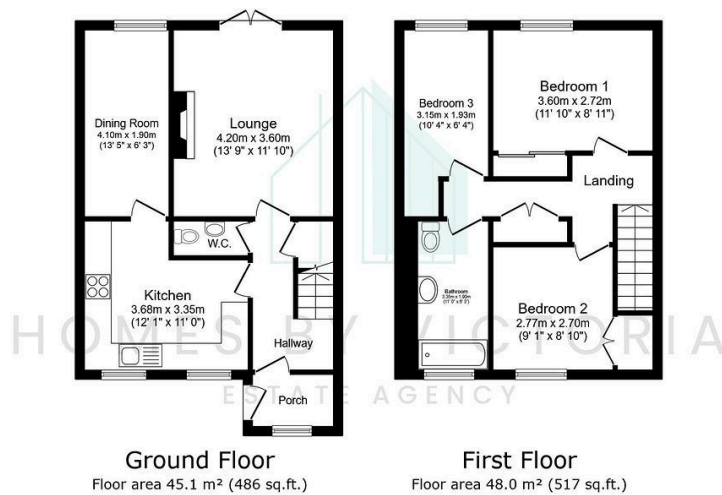
The outdoor space is equally impressive with a fully landscaped, low-maintenance garden. A paved patio leads to an artificial lawn and a further raised patio seating area, perfect for relaxing or hosting gatherings. Large fenced boundaries ensure privacy and security, creating a serene and secluded haven.

To the front of the property, a tarmac driveway provides ample off-road parking, offering convenience and practicality for modern family living.

This stunning home offers a perfect blend of modern living and thoughtful design, making it a fantastic opportunity for families or professionals alike. Don't miss your chance to own a home in this desirable location!

**Call now you arrange your viewing!**





- LOCATED IN THE SOUGHT AFTER AREA OF WALKWOOD
- THREE BEDROOM SEMI-DETACHED
- LOUNGE WITH FEATURE MEDIA WALL
- DOWNSTAIRS WC
- LOW MAINTENANCE REAR GARDEN
- IMMACULATE THROUGHOUT
- MODERN FITTED KITCHEN
- SEPERATE DINING ROOM
- MODERN FAMILY BATHROOM
- TARMAC DRIVEWAY FOR MULTIPLE VEHICLES



homesbyvictoria.co.uk  
victoria@homesbyvictoria | 07833 136521

FOR M HOMES MIDLANDS LIMITED trading as Homes By Victoria Company Number: 13688840 VAT no: 470190115



HOMES BY VICTORIA  
ESTATE AGENCY