



HOMES BY VICTORIA
ESTATE AGENCY

Bilbury Close, Walkwood, Redditch, B97 5XW

Offers Over £200,000

🛏 2 🚿 1 🚿 1



****NEW TO THE MARKET****

Welcome to this beautifully presented and tastefully decorated two-bedroom middle terrace home, located in the highly sought-after Walkwood area of Redditch. Perfect for first-time buyers or as an investment opportunity, this delightful property has been thoughtfully improved by its current owner, including the addition of a complete new roof.

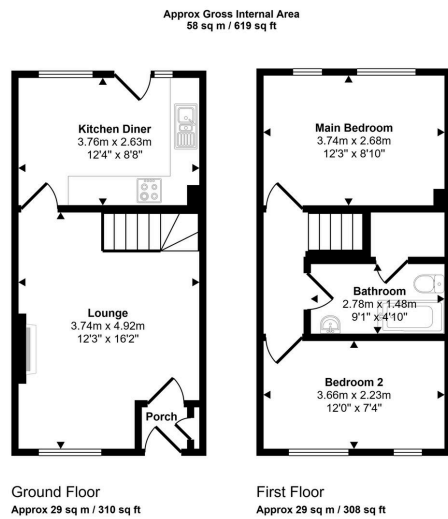
Upon entering, you are greeted by a small yet welcoming entrance hallway that leads into a cosy lounge, complete with a charming feature fireplace. The stairs to the first floor are conveniently located within the lounge, providing a practical and stylish flow to the home. At the rear, the modern kitchen diner serves as a true highlight, offering a bright and airy space thanks to its abundance of natural light. It boasts an integrated electric oven, gas hob, overhead extractor and space for under-counter appliances. A double glazed rear door open directly onto the garden, making this an ideal space for both dining and entertaining.

Upstairs, you'll find two generously sized bedrooms, both offering ample space and versatility. The refitted bathroom is equally impressive, featuring modern finishes and a generous airing cupboard that houses the combi-boiler.

Externally, the property enjoys a beautifully maintained garden, complete with a paved patio, a neatly kept lawn, fenced boundaries, and rear gated access. To the front, there is a fore garden and a dedicated parking space for added convenience.

This charming home is a must-see. Don't miss the chance to make it yours, call now to arrange a viewing!





This floorplan is only for illustrative purposes and is not to scale. Measurements of rooms, doors, windows, and any items are approximate and no responsibility is taken for any error, omission or mis-statement. Icons of items such as bathroom suites are representations only and may not look like the real items. Made with Made Snappy 360.

- SOUGHT AFTER LOCATION
- LOUNGE
- TWO GENEROUS SIZED BEDROOMS
- FRONT AND REAR GARDENS
- DOUBLE GLAZED AND GAS CENTRAL HEATING
- IDEAL FIRST TIME BUYER HOME OR INVESTMENT PURCHASE
- MODERN KITCHEN DINER
- RE-FITTED BATHROOM
- MUCH IMPROVED BY HOMEOWNER
- EPC RATING C & COUNCIL TAX BAND B



homesbyvictoria.co.uk
victoria@homesbyvictoria | 07833 136521

FOR M HOMES MIDLANDS LIMITED trading as Homes By Victoria Company Number: 13688840 VAT no: 470190115



HOMES BY VICTORIA
ESTATE AGENCY