



2 bedroom Mid Terraced Bungalow located in Little Oakley.

Guide Price
£240,000 - £260,000

Find us on..



JOHN ALEXANDER
ESTATE AGENTS



JOHN ALEXANDER
ESTATE AGENTS

Rectory Road Little Oakley Harwich CO12 5LE



2



1



1



EPC

F



FULL DESCRIPTION

THE OVERVIEW

Guide Price Of £240,000 - £260,000

Nestled on Rectory Road, this charming two-bedroom mid-terraced bungalow offers beautiful surrounding views. The property comprises a spacious lounge/diner, a well-appointed kitchen, a family bathroom, and two comfortable bedrooms.

THE HOME

Stepping inside, you are welcomed into a spacious lounge and dining area. The property also features a well-equipped kitchen and a lobby area providing access to the family bathroom. Completing the layout are two generously sized and comfortable bedrooms.

THE OUTSIDE

Outside, the property offers off-road parking with a small driveway, and to the rear, a private garden.

THE LOCATION

Ideally situated near the popular Cherry Tree Pub, this property enjoys a highly sought-after location known for its friendly community and picturesque surroundings. The area boasts stunning countryside views, offering a perfect blend of peaceful living and convenient access to local amenities, shops, and transport links. This desirable setting makes it an excellent choice for those seeking both comfort and charm.



FLOORPLAN

Rectory Road

Approximate Gross Internal Area = 66.9 sq m / 720 sq ft

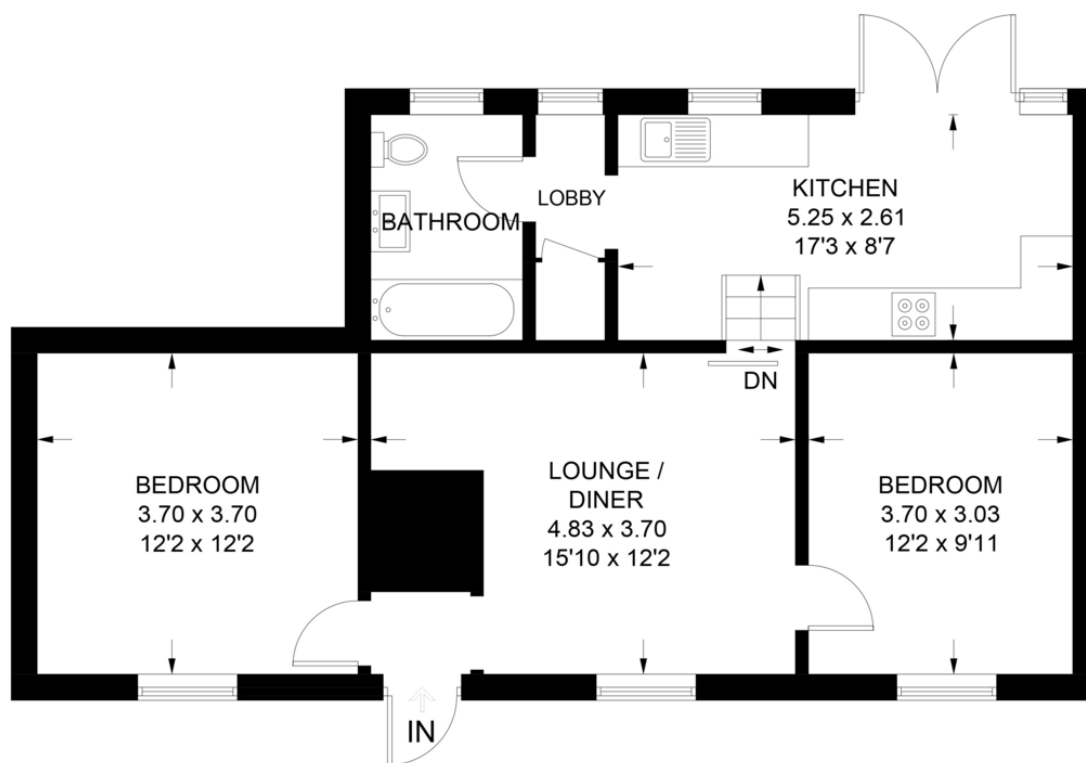


Illustration for identification purposes only,
measurements are approximate, not to scale.

DIRECTIONS

CONTACT

288 High Street
Harwich
Essex
CO12 3PD

E enquiries@john-alexander.co.uk

T 01255 520007

www.john-alexander.co.uk

Find us on..



JOHN ALEXANDER
ESTATE AGENTS