



## 3 bedroom Mid Terraced House located in Harwich.

Guide Price  
£220,000 - £240,000

Find us on..



  
JOHN ALEXANDER  
ESTATE AGENTS



**JOHN ALEXANDER**  
ESTATE AGENTS

King Georges  
Avenue  
Harwich  
CO12 4AG



3



1



2



B



TB  
C



## FULL DESCRIPTION

### THE OVERVIEW

\*\*\*Guide Price Of £220,000 - £240,000\*\*\*

Located on a quiet residential street along King Georges Avenue, this three-bedroom mid-terrace home offers a welcoming living room, a compact yet functional kitchen, and a versatile dining area that could also be used as a home office. Upstairs, you'll find three bedrooms and a family bathroom, along with a private rear garden.

### THE HOME

Stepping inside, the home offers a spacious yet cosy lounge, a compact kitchen, and a separate dining room that also works well as a home office. Upstairs, you'll find three generously sized bedrooms, along with a family bathroom that completes the upper floor. The layout flows nicely, making it easy to move from one room to the next, and there's a comfortable, lived-in feel throughout. It's the kind of place that's easy to settle into, whether you're starting out or looking for a bit more room for a growing family.

### THE OUTSIDE

Stepping outside the home, you'll find a garden with a small patio area, ideal for unwinding and relaxing after a busy day. Towards the front of the property, there is on-road parking, making it convenient for you and guests. The area is quiet and peaceful, offering a sense of privacy and calm while still being close to local amenities.

### THE LOCATION

The property is situated on a peaceful, quiet road, yet remains conveniently close to local schools and shops, making everyday living simple and hassle-free. With essential amenities just a short walk or drive away, you'll enjoy added convenience for all your daily needs.

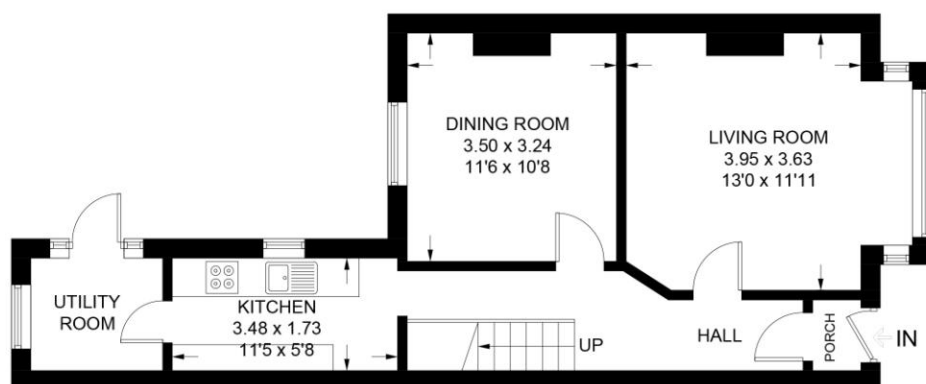




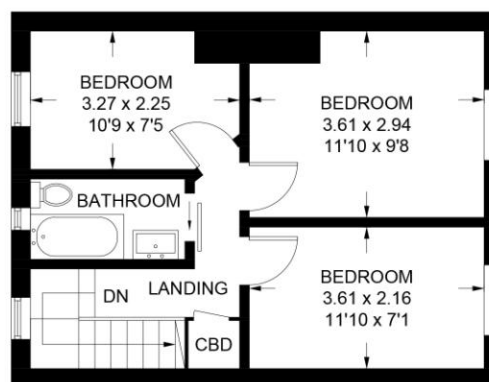
## FLOORPLAN

### Cambridge Terrace

Approximate Gross Internal Area = 86.5 sq m / 931 sq ft



**Ground Floor**  
49.5 sq m / 533 sq ft



**First Floor**  
37.0 sq m / 398 sq ft

Illustration for identification purposes only,  
measurements are approximate, not to scale.

## DIRECTIONS

### CONTACT

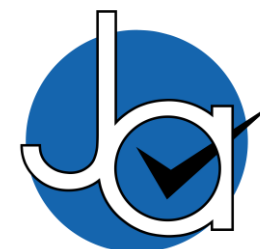
**288 High Street**  
**Harwich**  
**Essex**  
**CO12 3PD**

**E [enquiries@john-alexander.co.uk](mailto:enquiries@john-alexander.co.uk)**

**T 01255 520007**

**[www.john-alexander.co.uk](http://www.john-alexander.co.uk)**

Find us on..



**JOHN ALEXANDER**  
ESTATE AGENTS