



4 bedroom Semi-Detached House located in The Willows.

Guide Price
£325,000 - £350,000

Find us on..



JOHN ALEXANDER
ESTATE AGENTS

Holm Oak The Willows Colchester CO2 8QA



4



1



1



C



EPC

C



FULL DESCRIPTION

OVERVIEW

***GUIDE PRICE of £325,000 - £350,000 ***

John Alexander are pleased to present to market this four bedroom semi-detached home situated in the popular Willows Development off Mersea Road in South Colchester. Being conveniently located for local amenities, local Primary and Secondary Schools. Colchester City Centre is a short drive away offering a number of High Street shops, bars and eateries, Colchester Town railway station is also close by, offering direct links to London Liverpool Street.

Property benefits include a kitchen/diner, lounge, cloakroom, four bedrooms, family bathroom, off road parking, garage and enclosed rear garden.

ROOM DIMENSIONS

Entrance Hall - Doors to:

Cloakroom

Living Room - 19' 8" x 10' 11" (5.99m x 3.33m)

Kitchen/Diner - 17' 1" x 7' 10" (5.21m x 2.39m)

First Floor Landing - Doors to:

Bedroom One - 13' 6" x 10' 4" (4.11m x 3.15m)

Bedroom Two - 12' 8" x 8' 4" (3.86m x 2.54m)

Bedroom Three - 12' 2" x 7' 10" (3.71m x 2.39m)

Bedroom Four- 8' 5" x 8' 2" (2.57m x 2.49m)

Family Bathroom

OUTSIDE

To rear, enclosed by panel fencing with shrub borders, mostly laid to lawn with a patio area.

To the front is a grassed area separating the neighbouring property, having a driveway and gives access to the single garage with up and over door.



FLOORPLAN

Holm Oak

Approximate Gross Internal Area = 102.9 sq m / 1107 sq ft
 Garage = 11.4 sq m / 123 sq ft
 Total = 114.3 sq m / 1230 sq ft

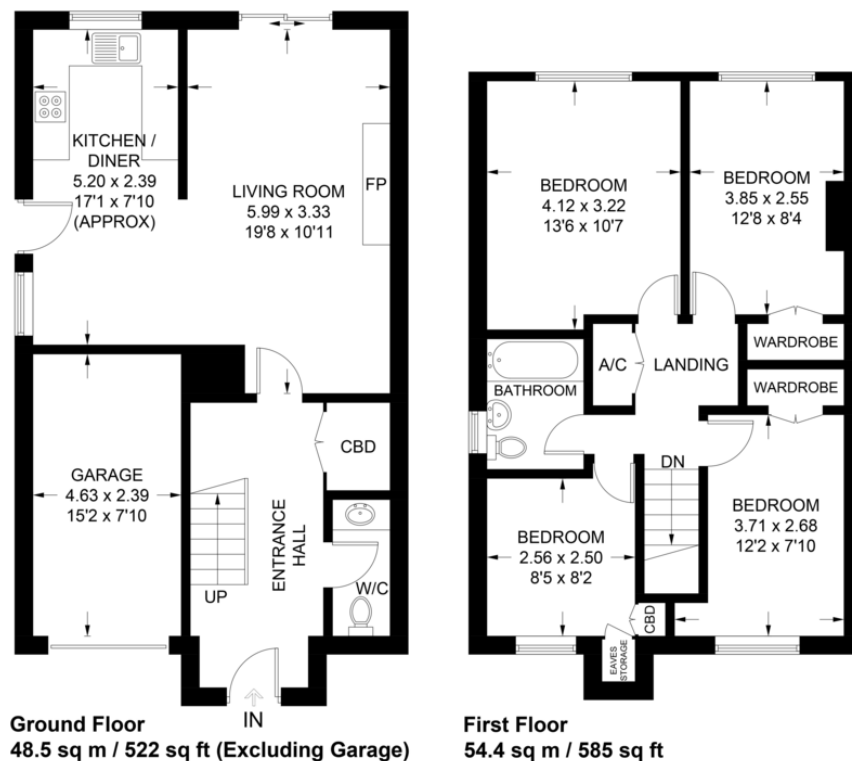


Illustration for identification purposes only,
 measurements are approximate, not to scale.

DIRECTIONS

CONTACT

288 High Street
Harwich
Essex
CO12 3PD

E enquiries@john-alexander.co.uk

T 01255 520007

www.john-alexander.co.uk

Find us on..



JOHN ALEXANDER
 ESTATE AGENTS