



2 bedroom Mid Terraced House located in Harwich.

Offers In Excess Of
£220,000

Find us on..




JOHN ALEXANDER
ESTATE AGENTS



JOHN ALEXANDER
ESTATE AGENTS

Stour Close Harwich Essex CO12 4TL

FULL DESCRIPTION

THE HOME

Offers In Excess Of £220,000

Stour Close is a well-presented mid terraced home situated in a peaceful area of Harwich, Essex. This property offers a comfortable living space with a cosy layout, including two bedrooms, ideal for a small family. The home is conveniently located near local amenities, with easy access to nearby facilities.

ENTRANCE HALLWAY

The entrance hall features a UPVC front door, providing access to the home.

KITCHEN

10' 6" x 6' 7" (3.2m x 2.01m)

The kitchen is well-equipped with modern fittings, offering ample cupboard space for storage. It features a practical layout with space for appliances.

LIVING ROOM

12' 8" x 13' 0" (3.86m x 3.96m)

The living room is spacious and inviting, with plenty of natural light flooding in through large windows. It offers a comfortable area for relaxation, featuring a radiator for warmth and neutral decorations

DOWNSTAIRS WC

The downstairs WC is a convenient and practical space, featuring a low-level toilet and a small washbasin.

UPSTAIRS HALLWAY

The upstairs hallway is a light and airy space, connecting the bedrooms and bathroom.

BEDROOM ONE

13' 1" x 9' 0" (3.99m x 2.74m)

Bedroom one is a generously sized room, offering plenty of space for a double bed and additional furniture. It also features large windows that allow natural light to fill the room.

BEDROOM TWO

10' 8" x 9' 7" (3.25m x 2.92m)

Bedroom two is a spacious and versatile room, ideal for use as a guest bedroom or a home office. It features a large window, allowing natural light to brighten the space.

BATHROOM

This well-appointed bathroom is both functional and inviting. Featuring a modern suite, it includes a spacious bathtub with a shower overhead.

OUTSIDE

The outside features a well-maintained front garden, with neat greenery and a tidy pathway leading to the front door. There is also ample space for off-road parking. The rear garden is a private, peaceful space, perfect for outdoor relaxation. It offers room for a small patio area for dining or lounging, and plenty of potential to make it your own.

LOCATION

Stour Close is situated in a quiet, residential area of Harwich. The location offers a peaceful



2



1



1



B



EPC

C



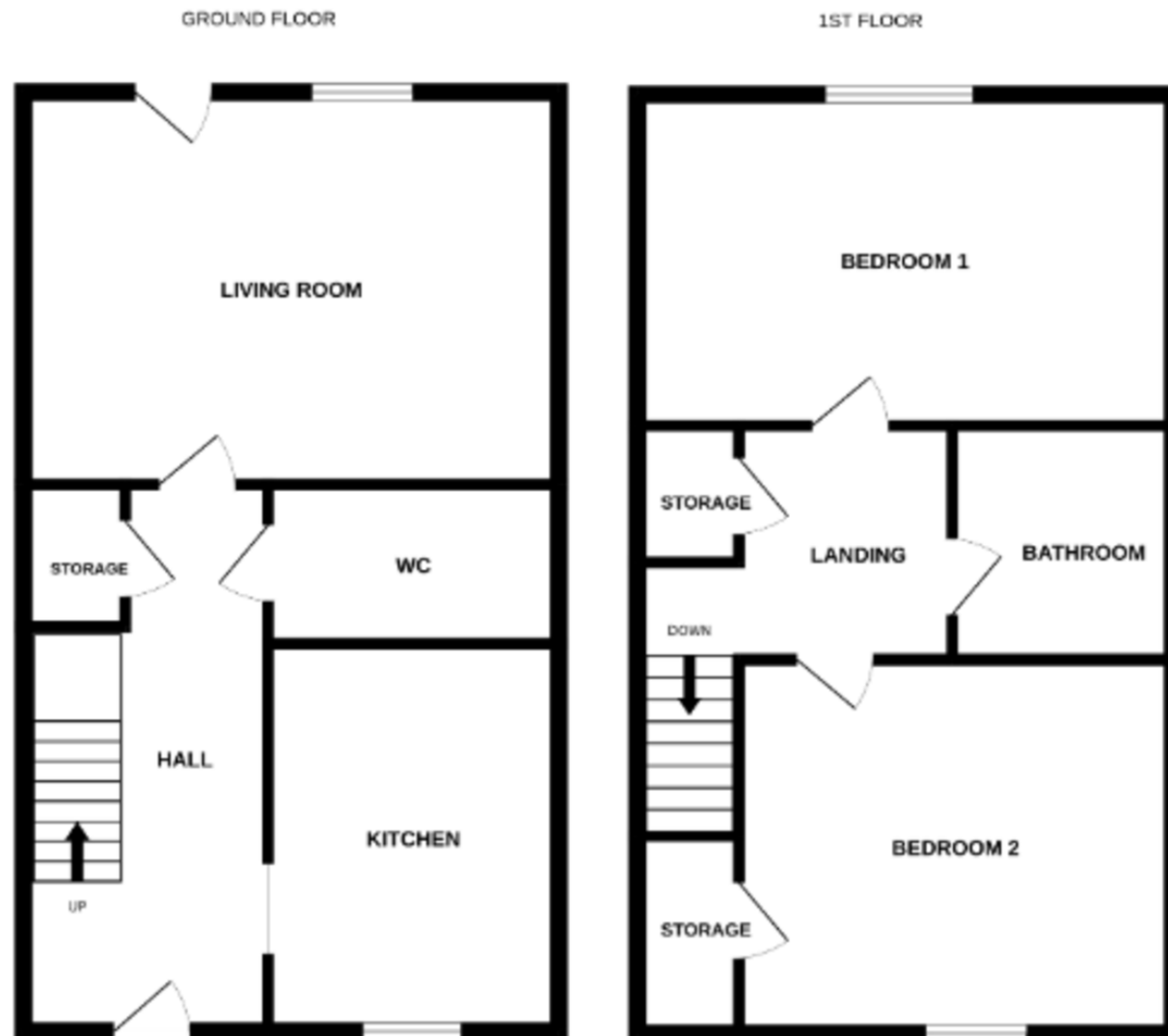


environment while still being conveniently close to a range of amenities. Within a short distance, you'll find local shops, schools, and public services, making daily life easy and convenient. For those who enjoy the outdoors, the coast is nearby, offering beautiful walks and seaside views.



Score	Energy rating	Current	Potential
92+	A		
81-91	B		89 B
69-80	C	72 C	
55-68	D		
39-54	E		
21-38	F		
1-20	G		

FLOORPLAN



DIRECTIONS

CONTACT

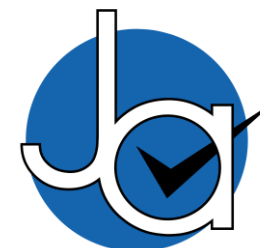
**288 High Street
Harwich
Essex
CO12 3PD**

E enquiries@john-alexander.co.uk

T 01255 520007

www.john-alexander.co.uk

Find us on..



JOHN ALEXANDER
ESTATE AGENTS